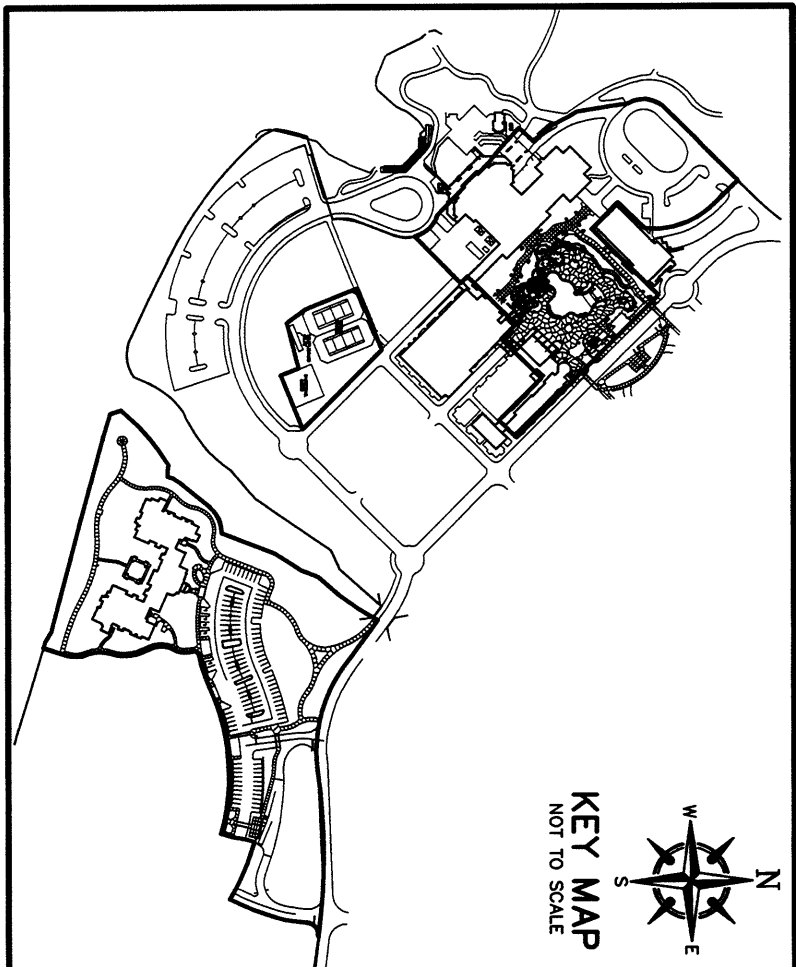
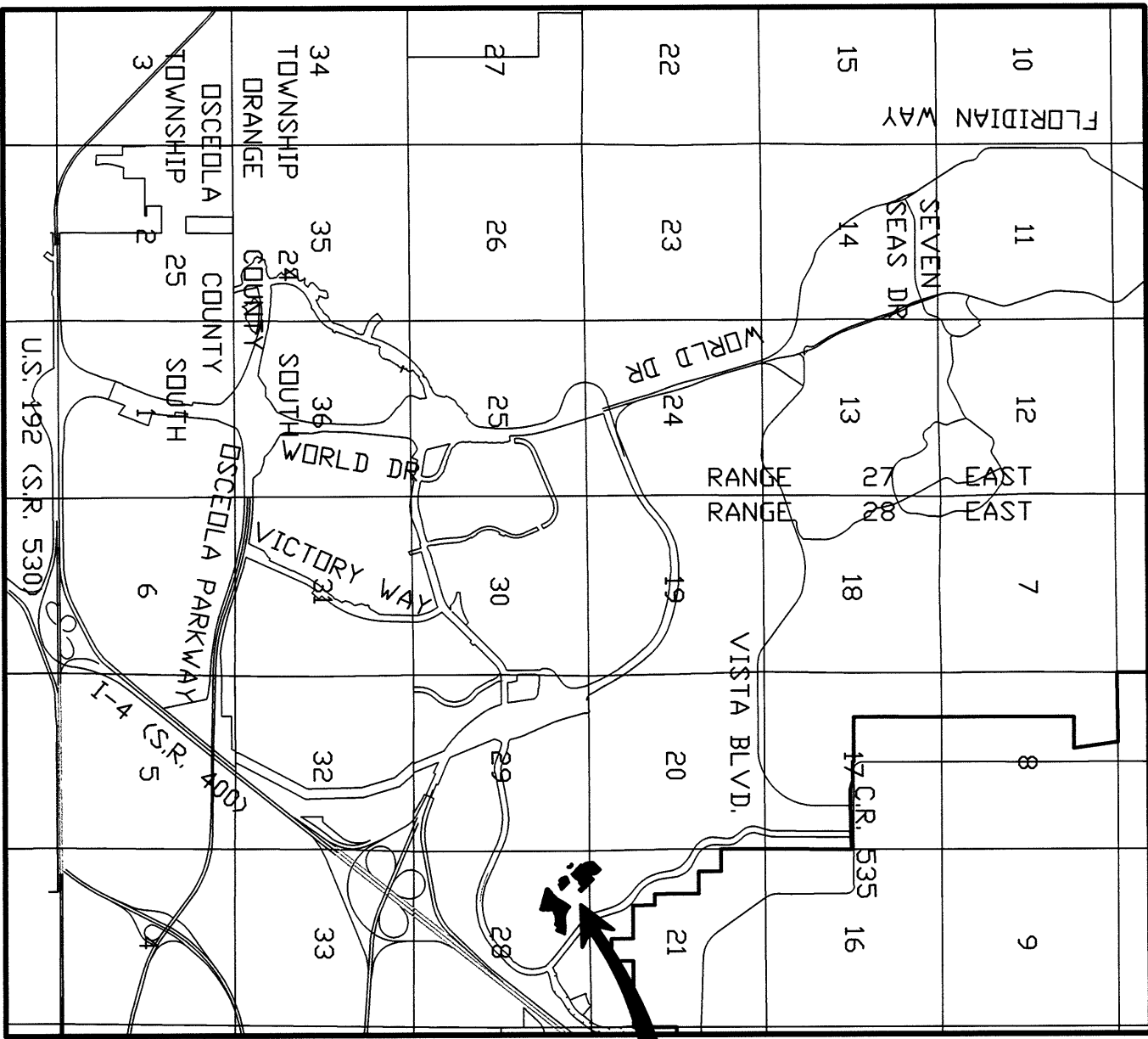


DISNEY'S SARATOGA SPRINGS RESORT
A LEASEHOLD CONDOMINIUM
EXHIBIT "A" – PHASE 1
SECTIONS 21 AND 28, TOWNSHIP 24 SOUTH, RANGE 28 EAST,
ORANGE COUNTY, FLORIDA.



ABBREVIATIONS
N NORTH
S SOUTH
E EAST
W WEST
TOWNSHIP
RANGE
P.O.C. POINT OF COMMENCEMENT
P.O.B. POINT OF BEGINNING

VICINITY MAP



SITE

GENERAL NOTES

- 1) The bearings are based on S 89° 57' 20" E being the North line of the Northwest 1/4 of Section 28, T 24 S, R 28 E.
- 2) Unless a comparison is made, measured bearings and distances are identical with leasehold values.
- 3) All dimensions are in feet and decimals thereof.
- 4) An Abstract of Title was not furnished to this surveyor.
- 5) No title opinion is expressed or implied.
- 6) The boundary survey was provided by Reedy Creek Energy Services, Surveying and Mapping Dept., dated 04/16/2003.
- 7) The floor plans were prepared from drawings supplied by Glover Smith Bode, Architects & Planners, dated Nov. 19, 2002.
- 8) Various easements have been granted and retained in Article 4 of the Declaration of Condominium. The developer has reserved the right to grant other easements over the Condominium property from time to time.
- 9) See Article 1 of the Declaration of Condominium for the definition of "Unit", "Commercial Unit", "Common Element", "Limited Common Element" and other items.
- 10) Other easements over and benefitting the Condominium Property have been granted and retained in that certain Master Declaration of Covenants, Conditions and Restrictions recorded in Official Records Book 7419, Pages 4582 of the Public Records of Orange County, Florida.
- 11) Where the upper, lower or perimeter boundary of any Unit is not otherwise specified within this Exhibit "A", such boundary shall be:
 1. Upper and Lower Boundaries: The upper and lower boundaries of the Unit shall be the following boundaries extended to an intersection with the perimeter boundaries.
 - A. Upper Boundaries: The interior unfinished surface of the ceiling of the Unit.
 - B. Lower Boundaries: The horizontal plane through the finished undecorated surface of the floor of the Unit.
 2. Perimeter Boundaries: The perimeter boundaries of the Unit shall be the vertical planes along and coincident with the interior unfinished surfaces of perimeter walls of a closed figure.
- 12) Not included in the description of the Units are as follows: balconies, terraces, exterior stairwells, elevators and utility rooms.
- 13) Unless otherwise designated within this Exhibit "A", any portion of the Condominium Property not included within a Unit is a Common Element.
- 14) DVD reserves all rights pursuant to section 721.07 (5) (f), Florida Statutes (2002) to vary the phasing plan as to phase boundaries, plot plans and floor plans, unit types, unit sizes and unit type mixes, numbers of units and recreational areas and facilities with respect to each subsequent phase.
- 15) The description of the boundaries of the overall site plan as set forth herein is for the purpose of describing the property which may ultimately be declared as part of the condominium in phases, however, DVD reserves the right to declare additional property as part of the condominium and to declare additional property not described herein to be a part of the condominium, whether or not such additional property is contiguous to the property described herein.
- 16) Owners have non-exclusive ingress and egress access and parking pursuant to the Non-Exclusive Access and Parking Easement Agreement dated 7419, Page 4635 and recorded in Official Records Book 7419, Page 4635 and recorded in Official Records of Orange County, Florida.
- 17) Certain easements are reserved and granted for non-exclusive use of swimming pool and other facilities pursuant to the Facilities Agreement dated 7419, Page 4647, 2003 and recorded in Official Records Book 7419, Page 4647, Public Records of Orange County, Florida.
- 18) Owners have certain non-exclusive utility easements pursuant to the Non-Exclusive Utility Easement Agreement dated _____, Page _____, Public Records of Orange County, Florida.

SURVEYORS CERTIFICATE

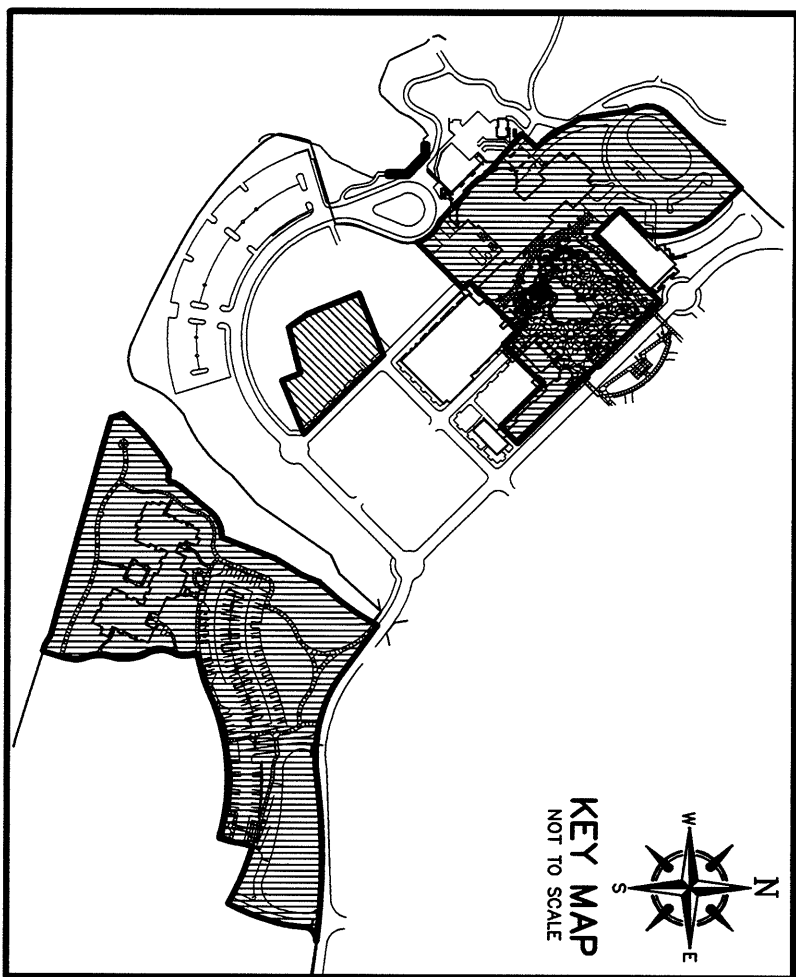
I HEREBY CERTIFY THAT THIS EXHIBIT "A", PAGES 1 THROUGH 15 IS A CORRECT REPRESENTATION OF THE IMPROVEMENTS IN PHASE 1 AS DESCRIBED HEREON AND THAT THE CONSTRUCTION OF SAID IMPROVEMENTS IS SUBSTANTIALLY COMPLETE SO THAT SUCH MATERIAL TOGETHER WITH THE PROVISIONS OF THE DECLARATION OF CONDOMINIUM OF DISNEY'S SARATOGA SPRINGS RESORT, A LEASEHOLD CONDOMINIUM, AS RECORDED IN OFFICIAL RECORD BOOK 7419, PAGE 4659 OF THE PUBLIC RECORDS OF ORANGE COUNTY, FLORIDA, DESCRIBING THE CONDOMINIUM PROPERTY, IS AN ACCURATE REPRESENTATION OF THE LOCATION AND DIMENSION OF THE IMPROVEMENTS AND THE IDENTIFICATION, LOCATION AND DIMENSIONS OF THE COMMON ELEMENTS AND OF EACH UNIT INCLUDED WITHIN PHASE 1 CAN BE DETERMINED FROM THESE MATERIALS.

DATED: 3-16-04

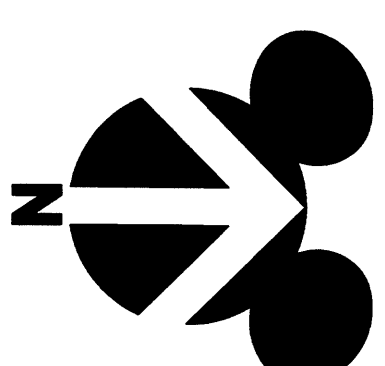
W. TURNER
PROFESSIONAL LAND SURVEYOR AND MAPPER #3967
STATE OF FLORIDA

NOTE:
Exhibit "A" to Declaration of Condominium of Disney's Saratoga Springs Resort, A Leasehold Condominium, recorded in Official Records Book 7419, Pages 4659 – 4778 of the Public Records of Orange County, Florida.





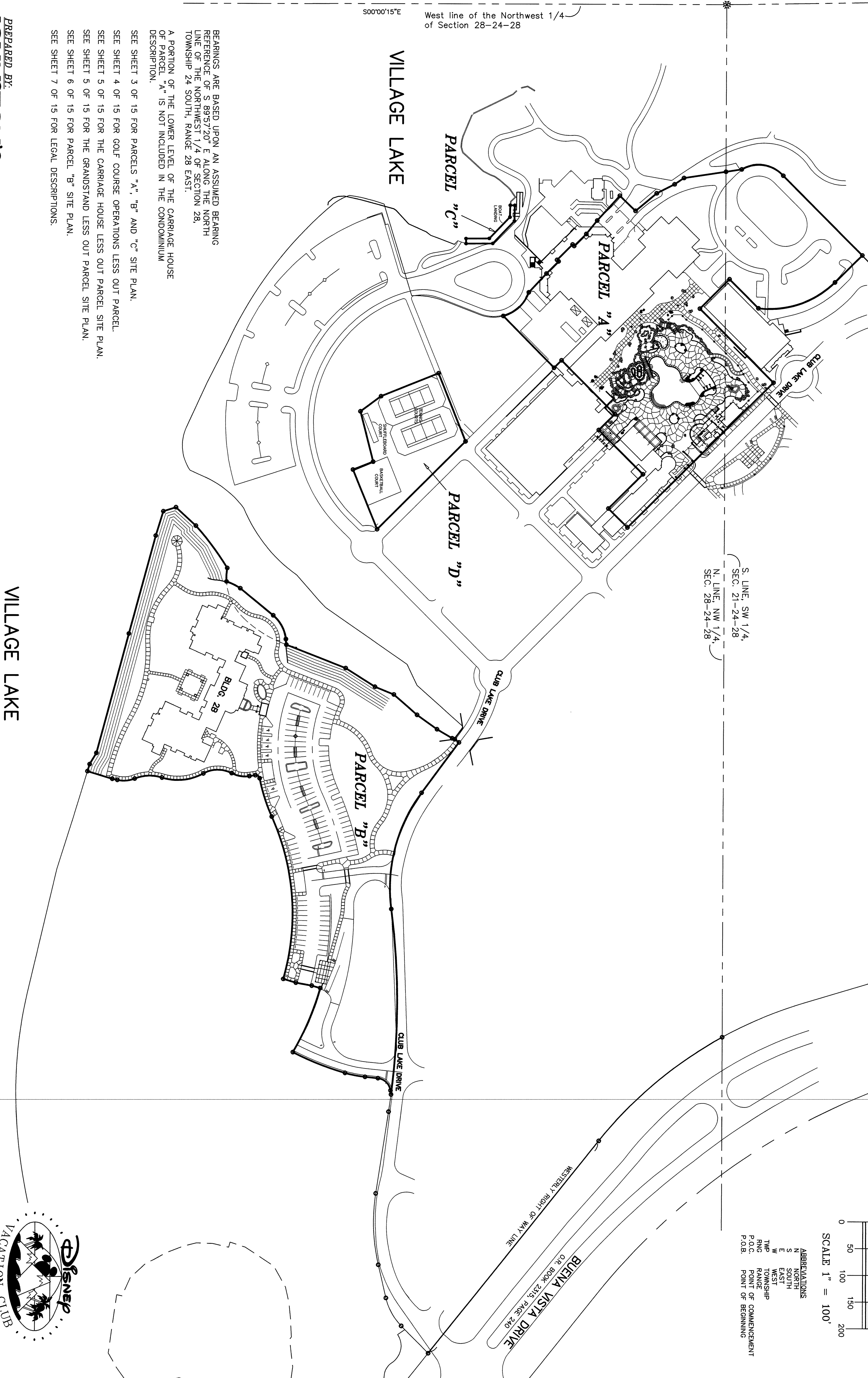
DISNEY'S SARATOGA SPRINGS RESORT
A LEASEHOLD CONDOMINIUM
EXHIBIT "A" – PHASE 1
SECTIONS 21 & 28, TOWNSHIP 24 SOUTH, RANGE 28 EAST,
ORANGE COUNTY, FLORIDA.
SITE PLAN – OVERALL



CONDOMINIUM EXHIBIT
BOOK **35** PAGE **2**

GRAPHIC SCALE IN
FEET TO THE INCH
0 50 100 150 200
SCALE 1" = 100'

ABBREVIATIONS
N NORTH
S SOUTH
E EAST
W WEST
TWP TOWNSHIP
RNG RANGE
P.O.C. POINT OF COMMENCEMENT
P.O.B. POINT OF BEGINNING



West line of the Northwest 1/4
of Section 28-24-28

500°00'15"E

BEARINGS ARE BASED UPON AN ASSUMED BEARING
REFERENCE OF S 89°57'20" E ALONG THE NORTH
LINE OF THE NORTHWEST 1/4 OF SECTION 28,
TOWNSHIP 24 SOUTH, RANGE 28 EAST.
A PORTION OF THE LOWER LEVEL OF THE CARRIAGE HOUSE
OF PARCEL "A" IS NOT INCLUDED IN THE CONDOMINIUM
DESCRIPTION.

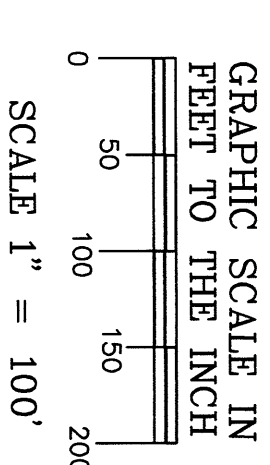
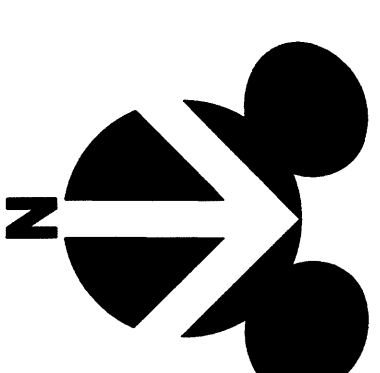
SEE SHEET 3 OF 15 FOR PARCELS "A", "B" AND "C" SITE PLAN.
SEE SHEET 4 OF 15 FOR GOLF COURSE OPERATIONS LESS OUT PARCEL.
SEE SHEET 5 OF 15 FOR THE CARRIAGE HOUSE LESS OUT PARCEL SITE PLAN.
SEE SHEET 5 OF 15 FOR THE GRANDSTAND LESS OUT PARCEL SITE PLAN.
SEE SHEET 6 OF 15 FOR PARCEL "B" SITE PLAN.
SEE SHEET 7 OF 15 FOR LEGAL DESCRIPTIONS.

PREPARED BY:
JOHNSTON'S
SURVEYING, INC.
800 Shady Lane, Kissimmee, Florida 34744-4893
(407) 847-2179 • Fax (407) 847-6140



SECTIONS 21 & 28, TOWNSHIP 24 SOUTH, RANGE 28 EAST,
ORANGE COUNTY, FLORIDA.

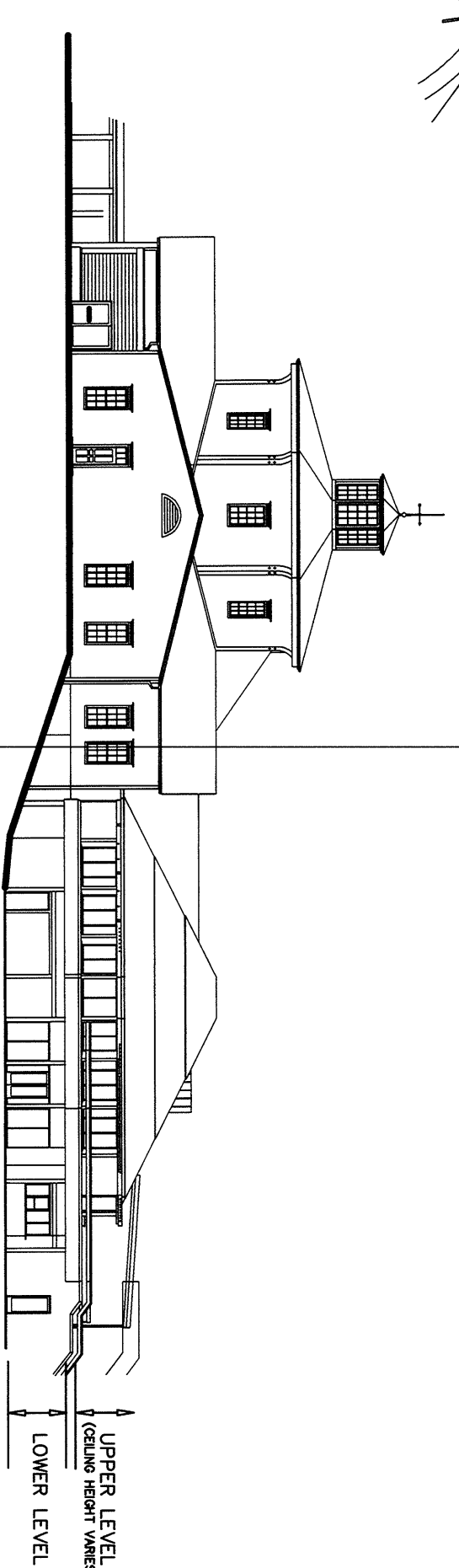
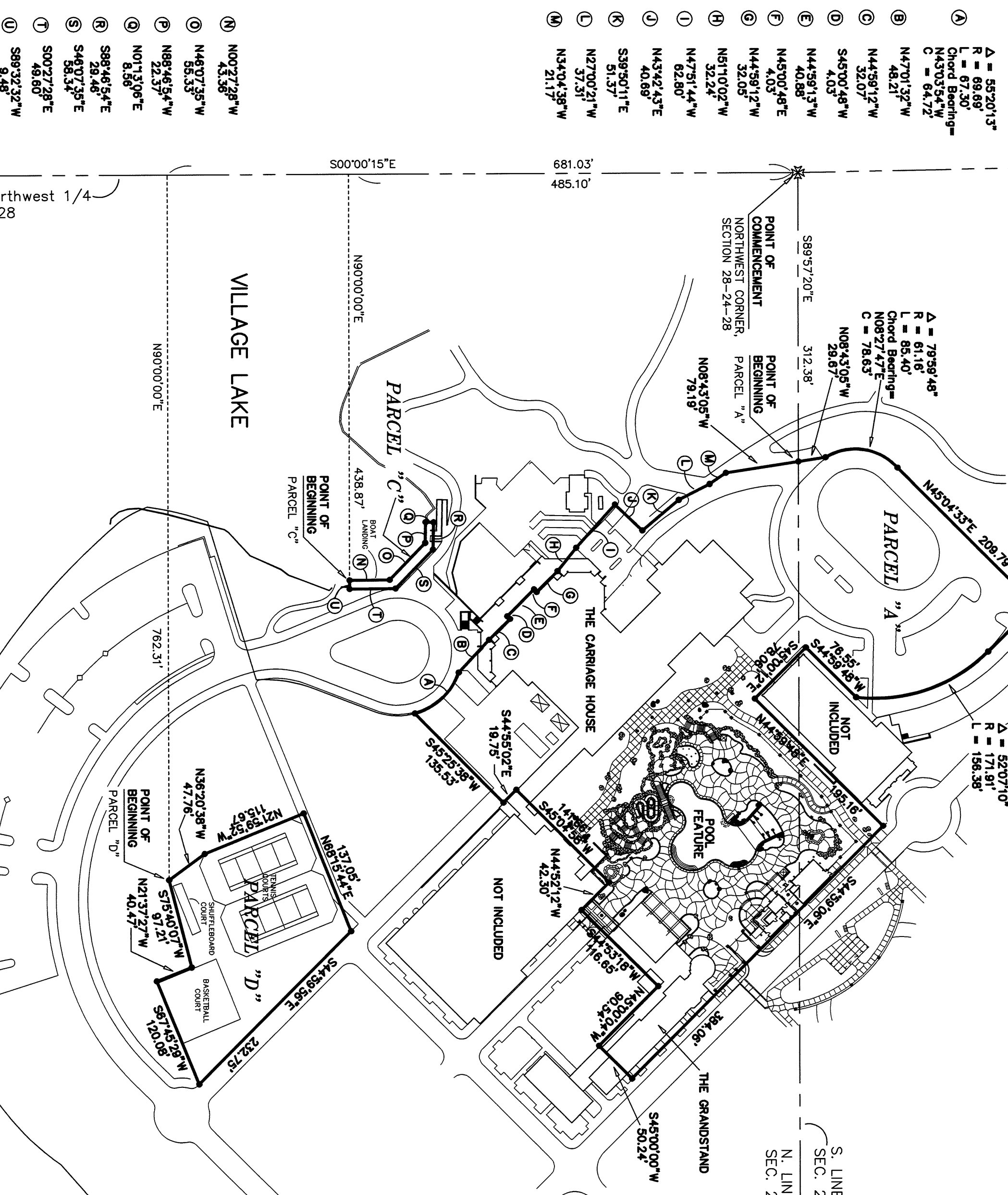
KEY MAP
NOT TO SCALE



ABBREVIATIONS
N NORTH
S SOUTH
E EAST
W WEST
TWP TOWNSHIP
RNG RANGE
P.O.C. POINT OF COMMENCEMENT
P.O.B. POINT OF BEGINNING

S. LINE, SW $\frac{1}{4}$,
SEC. 21-24-28

N. LINE, NW $\frac{1}{4}$
SEC. 28-24-28



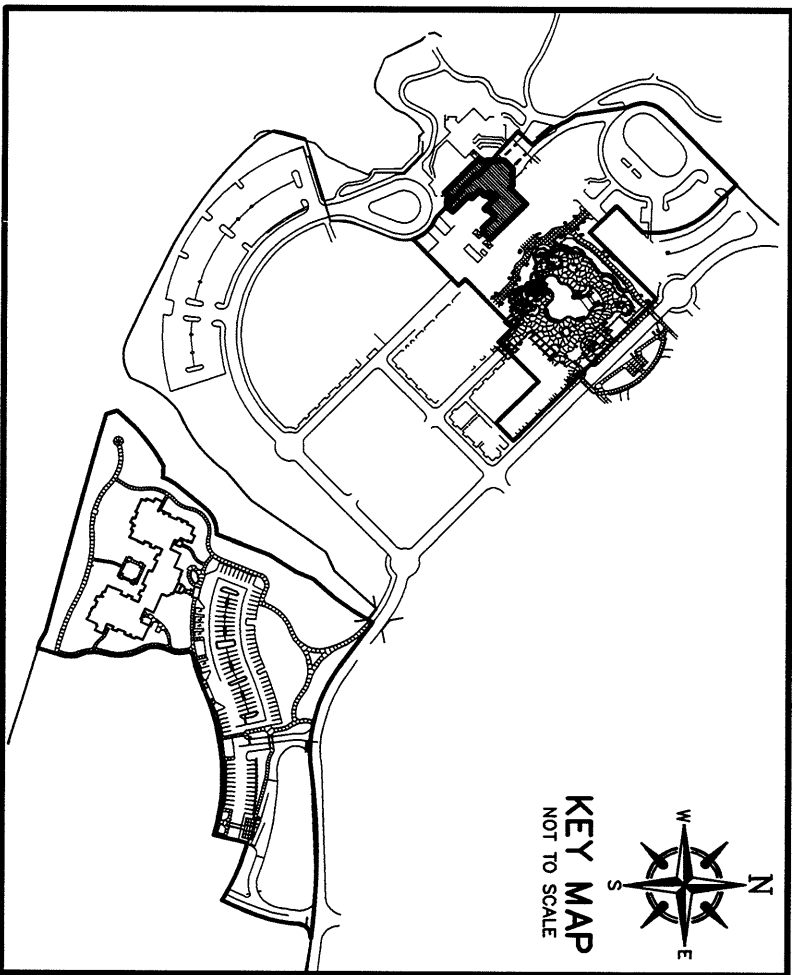
PARTIAL WEST ELEVATION OF THE CARRIAGE HOUSE



SHEET 3 OF 15

PREPARED BY:

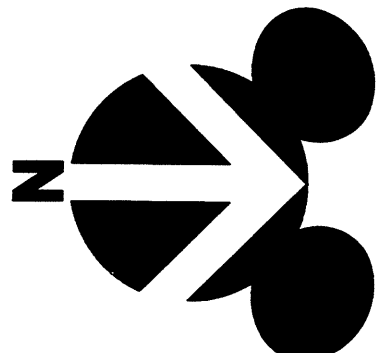
JOHNSTON'S
SURVEYING INC.
300 Shoofy Lane, Kissimmee, Florida 34744-8695
(407) 847-2179 • Fax (407) 847-6140



DISNEY'S SARATOGA SPRINGS RESORT
A LEASEHOLD CONDOMINIUM
EXHIBIT "A" – PHASE 1
SECTIONS 21 & 28, TOWNSHIP 24 SOUTH, RANGE 28 EAST,
ORANGE COUNTY, FLORIDA.
GOLF COURSE OPERATIONS LESS OUT PARCEL
LOWER LEVEL – THE CARRIAGE HOUSE

CONDOMINIUM EXHIBIT
BOOK 35 PAGE... 4

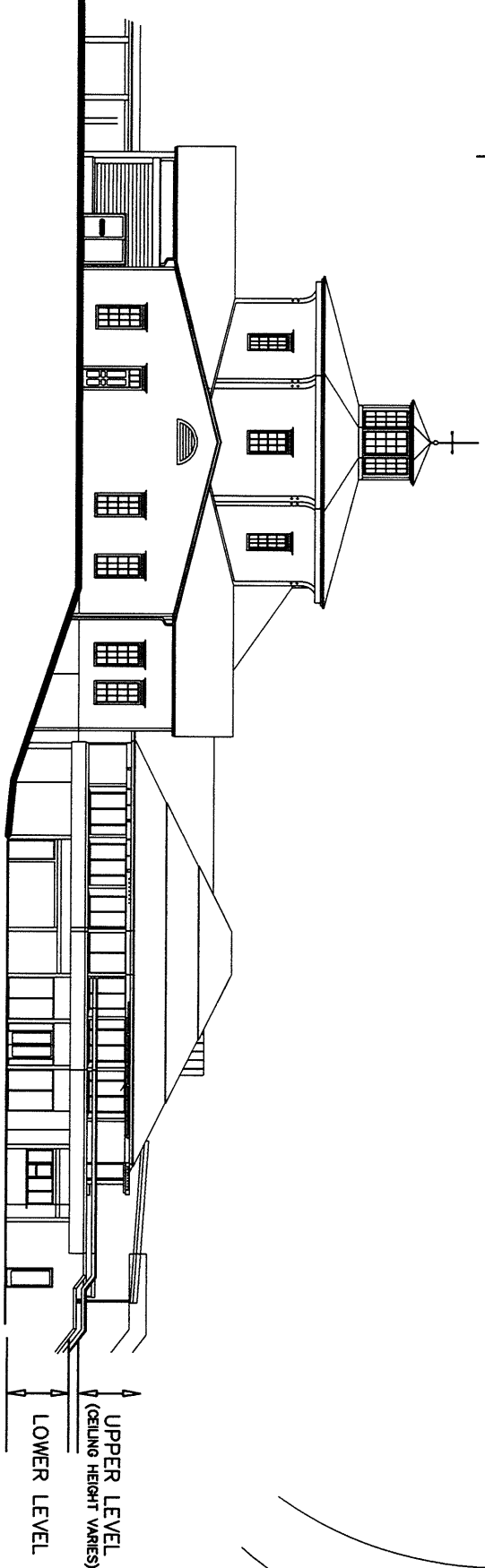
GRAPHIC SCALE IN
FEET TO THE INCH
0 15 30 45 60
SCALE 1" = 30'



ABBREVIATIONS
N NORTH
S SOUTH
E EAST
W WEST
TWP TOWNSHIP
RNG RANGE
P.O.B. POINT OF BEGINNING

- POINT OF COMMENCEMENT
NORTHWEST CORNER,
SECTION 28-24-28
- 1 S45°00'00"W 20.67
 - 2 S45°00'00"E 4.67
 - 3 S45°00'00"W 3.50
 - 4 S45°00'00"W 8.09
 - 5 S45°00'00"E 12.87
 - 6 S45°00'00"W 6.06
 - 7 N45°00'00"W 6.07
 - 8 S45°00'00"W 4.12
 - 9 S45°00'00"E 10.35
 - 10 S45°00'00"W 16.15
 - 11 N47°01'32"W 14.68
 - 12 S45°00'48"W 4.03
 - 13 N45°00'48"E 4.03

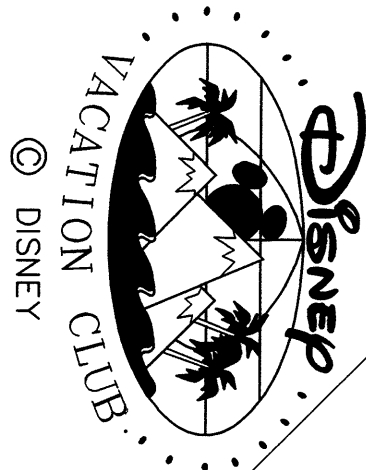
BEARINGS ARE BASED UPON AN ASSUMED BEARING
REFERENCE OF S 89°57'20" E ALONG THE NORTH
LINE OF THE NORTHWEST 1/4 OF SECTION 28,
TOWNSHIP 24 SOUTH, RANGE 28 EAST.
SEE SHEET 7 OF 15 FOR LEGAL DESCRIPTIONS.



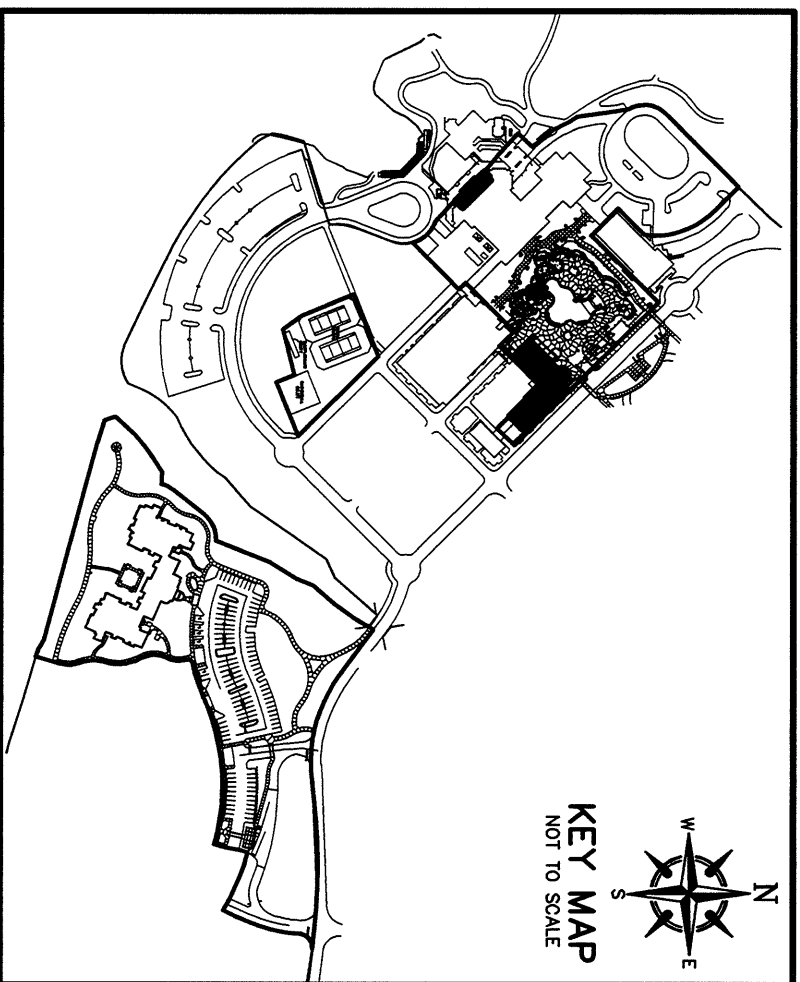
PARTIAL WEST ELEVATION OF THE CARRIAGE HOUSE
NOT TO SCALE

PREPARED BY:
JOHNSTON'S
SURVEYING, INC.
3001 State Road 160, Suite 100, Orlando, FL 32817
(407) 847-2179 • Fax (407) 847-8160

VILLAGE LAKE



SHEET 4 OF 15

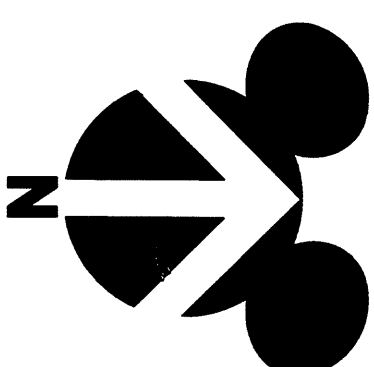


DISNEY'S SARATOGA SPRINGS RESORT
A LEASEHOLD CONDOMINIUM
EXHIBIT "A" – PHASE 1

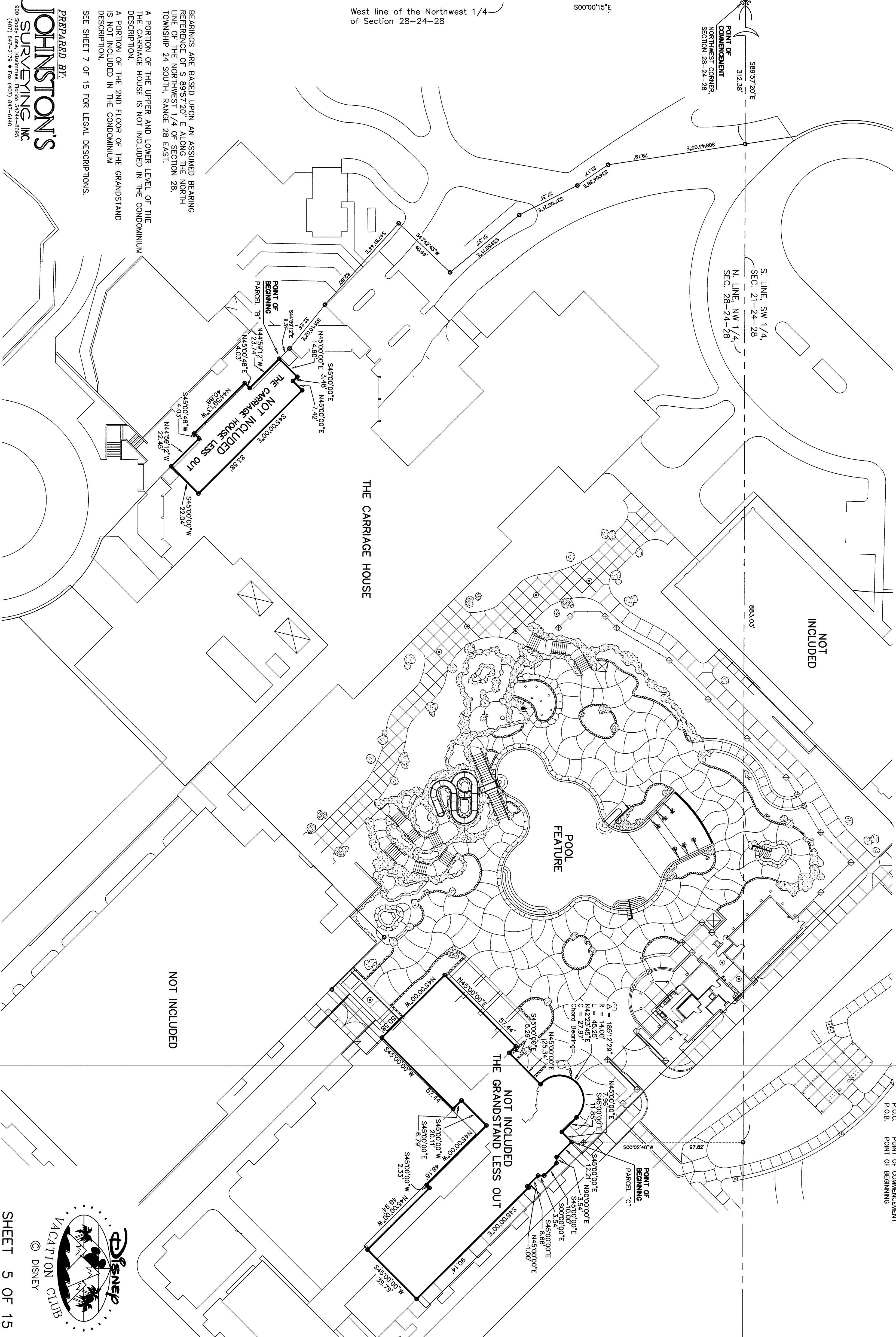
SECTIONS 21 & 28, TOWNSHIP 24 SOUTH, RANGE 28 EAST,
ORANGE COUNTY, FLORIDA.

THE CARRIAGE HOUSE LESS OUT PARCELS
THE GRANDSTAND LESS OUT PARCELS

GRAPHIC SCALE IN
FEET TO THE INCH
SCALE 1" = 30'



ABBREVIATIONS
N NORTH
S SOUTH
E EAST
W WEST
TWP TOWNSHIP
RNG RANGE
P.O.C. POINT OF COMMENCEMENT
P.O.B. POINT OF BEGINNING



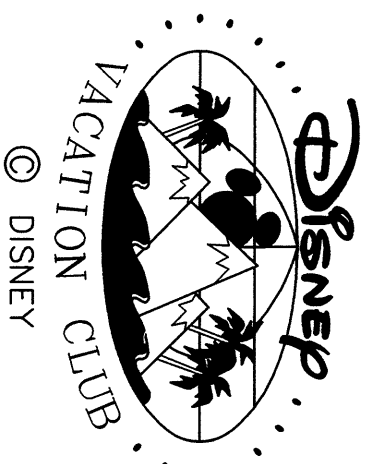
BEARINGS ARE BASED UPON AN ASSUMED BEARING
REFERENCE OF S 89°57'20" E ALONG THE NORTH
LINE OF THE NORTHWEST 1/4 OF SECTION 28,
TOWNSHIP 24 SOUTH, RANGE 28 EAST.

A PORTION OF THE UPPER AND LOWER LEVEL OF THE
THE CARRIAGE HOUSE IS NOT INCLUDED IN THE CONDOMINIUM
DESCRIPTION.

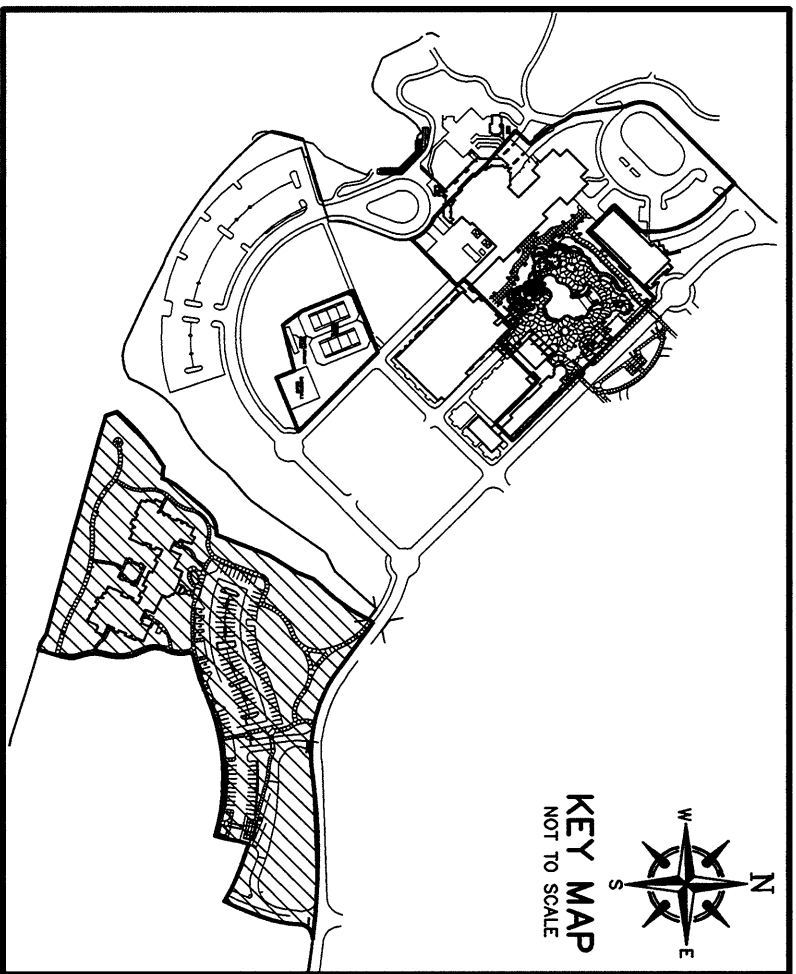
A PORTION OF THE 2ND FLOOR OF THE GRANDSTAND
IS NOT INCLUDED IN THE CONDOMINIUM
DESCRIPTION.

SEE SHEET 7 OF 15 FOR LEGAL DESCRIPTIONS.

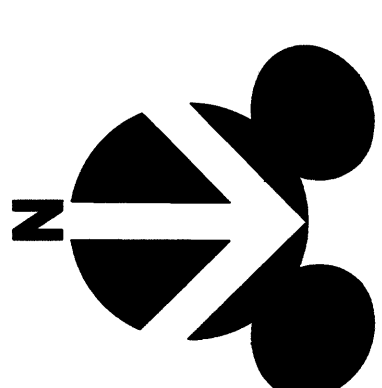
PREPARED BY:
JOHNSTON'S
SURVEYING, INC.
500 South Lake, Kissimmee, Florida 33744-8889
(407) 847-2179 • Fax (407) 847-6140



SHEET 5 OF 15

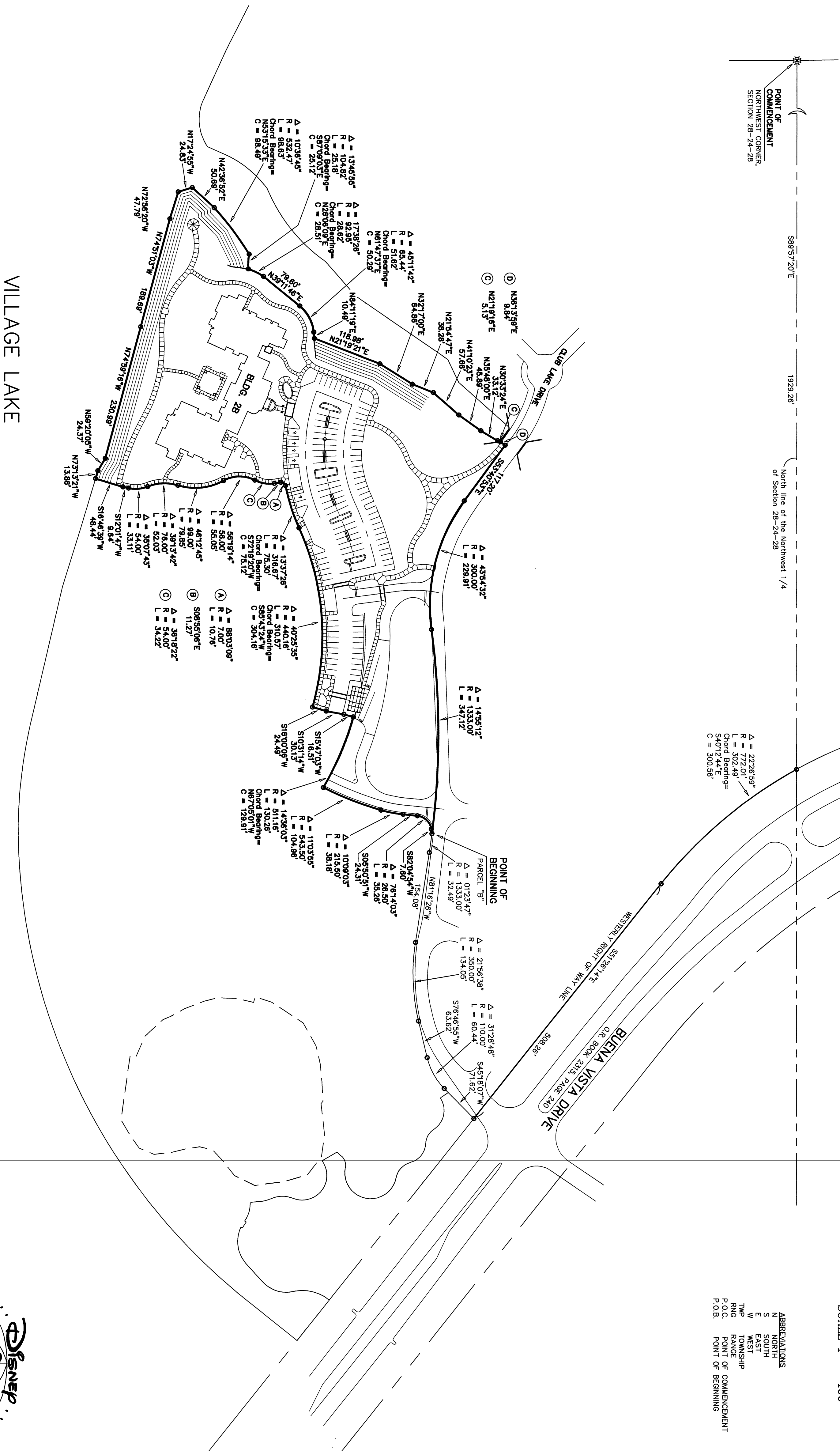


DISNEY'S SARATOGA SPRINGS RESORT
A LEASEHOLD CONDOMINIUM
EXHIBIT "A" – PHASE 1
SECTIONS 28, TOWNSHIP 24 SOUTH, RANGE 28 EAST,
ORANGE COUNTY, FLORIDA.
SITE PLAN – PARCEL "B"



GRAPHIC SCALE IN
FEET TO THE INCH
0 50 100 150 200
SCALE 1" = 100'

ABBREVIATIONS
N NORTH
S SOUTH
E EAST
W WEST
TWP TOWNSHIP
RNG RANGE
POB POINT OF BEGINNING
F.S.D. FUTURE SUBDIVISION



PREPARED BY:
JOHNSTON'S
SURVEYING, INC.
500 South Lake Naranja, Orlando, Florida 32824-8800
(407) 847-2179 • Fax (407) 847-6140



NOTE: SEE SHEET 7 OF 15 FOR LEGAL DESCRIPTION

SHEET 6 OF 14

LEGAL DESCRIPTION
PARCEL "B"

[illegible]

***DISNEY'S SARATOGA SPRINGS RESORT
A LEASEHOLD CONDOMINIUM
EXHIBIT "A" – PHASE 1***

SECTIONS 28, TOWNSHIP 24 SOUTH, RANGE 28 EAST,
ORANGE COUNTY, FLORIDA.

LEGAL DESCRIPTIONS

N	6;14°-37° E.	(chord = 50.29 feet);	theance run
N	8;41°19' E.	a distance of 10.49 feet;	theance run
N	21°19'21" E.	a distance of 118.98 feet;	theance run
N	32°17'00" E.	a distance of 61.86 feet;	theance run
N	21°54'47" E.	a distance of 36.28 feet;	theance run
N	15°10'23" E.	a distance of 57.66 feet;	theance run
N	30°33'20" E.	a distance of 45.89 feet;	theance run
N	21°19'12" E.	a distance of 33.12 feet;	theance run
N	5;31°55'59" E.	a distance of 8.15 feet;	theance run
N	S53°43'50" E.	a distance of 11.20 feet;	theance run
N	S53°43'50" E.	a distance of 11.20 feet;	the Point of Beginning
N	of 300.00 feet,	and a central angle of 43°54'32";	the radius of the arc is 300.00 feet;
E	eastly (chord Bearing = S 75°38'09" E.	chord = 224.32 feet)	run
E	to a Point of Reverse Curve to the light having a radius of 1,455'12";	theance run	
E	1,333.00 feet and a central angle of 14°55'12";	theance run	
E	Eastly along the arc, a distance of 347.12 feet	to the Point of Beginning.	run

Containing 6.635 acres, more or less.

LEGAL DESCRIPTION
PARCEL "A"

A parcel of land lying in Section 28, Township 24 South, Range 28 East, Orange County, Florida, and being more particularly described as follows:

[illegible]

Containing 4.7125 acres, more or less

LEGAL DESCRIPTION
PARCEL "C"

A parcel of land lying in Section 28, Township 24 South, Range 28 East, Orange County, Florida, and being more particularly described as follows:

beginning, there run N 90°00'00" E, a distance of 43.85 feet to the Point of Beginning; there run N 03°27'28" W, a distance of 43.36 feet; there run N 46°07'35" W, a distance of 55.33 feet; there run N 01°13'06" E, a distance of 22.37 feet; there run N 88°45'54" E, a distance of 29.48 feet; there run N 46°07'35" E, a distance of 58.34 feet; there run N 00°27'28" E, a distance of 49.60 feet; there run N 89°33'32" W, a distance of 9.48 feet to the Point of Beginning.

containing 0.0223 acres, more or less.

LESS THE FOLLOWING DESCRIBED PARCEL, HAVING BOTH HORIZONTAL AND VERTICAL LIMITS WITHIN THE PHASE 1 THE CARRIAGE HOUSE LEGAL DESCRIPTION.

VERTICAL LIMITS

The Lower vertical limits being the unfinished floor level of the Upper level of The Carriage House and the Upper vertical limits being the unfinished ceiling level of the Upper level of The Carriage House.

THE CARRIAGE HOUSE LESS OUT PARCEL

A parcel of land being a portion of the Northwest 1/4 of Section 28, Township 24 South, Range 28 East, Orange County, Florida and being more particularly described as follows:

[illegible]

containing 2,056.85 square feet or 0.0472 acres, more or less.

LESS THE FOLLOWING DESCRIBED PARCEL, HAVING BOTH HORIZONTAL AND VERTICAL LIMITS WITHIN THE PHASE 1 LEGAL DESCRIPTION.

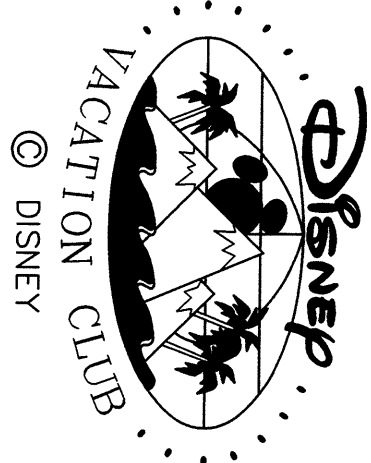
VERTICAL LIMITS
The Lower vertical limits being the unfinished floor level of the 1st Floor level of the Grandstand and the Upper vertical limits being the unfinished ceiling level of the 2nd Floor level of the Grandstand.

THE GRANDSTAND LESS OUT PARCEL

... parcel of land being a portion of the Northwest 1/4 of section 28, Township 24 South, Range 28 East, Orange County, Florida and being more particularly described as follows:

[illegible]

containing 9,360.9 / square feet or 0.2195 acres, more or less.

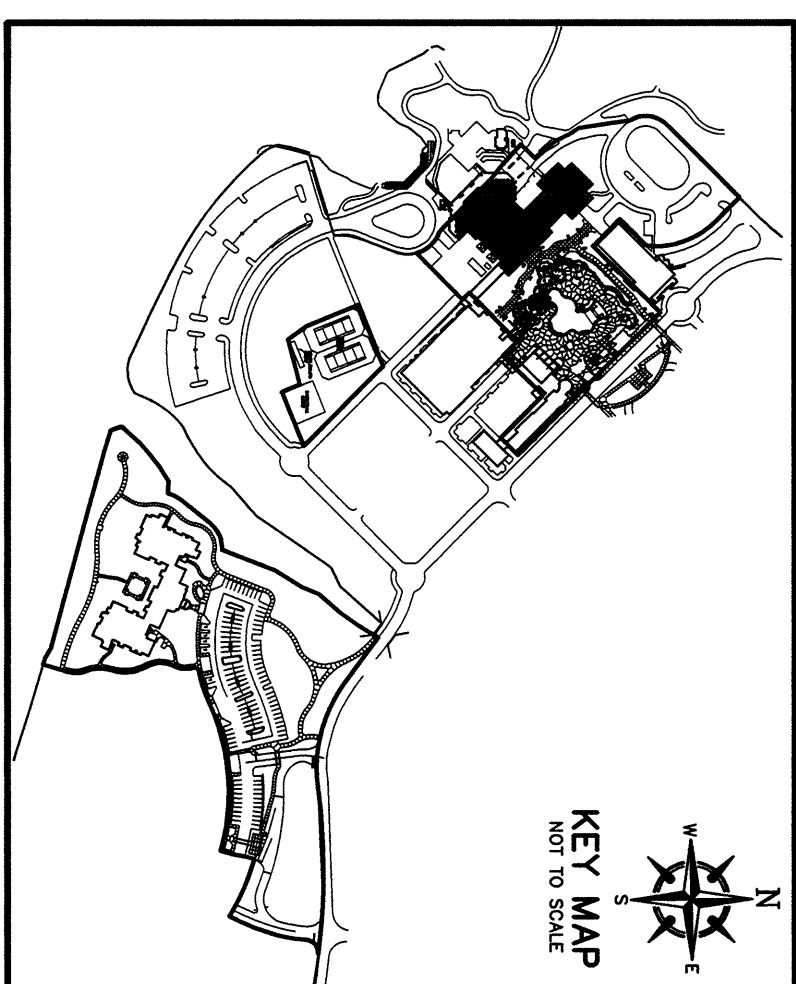


DISNEY'S SARATOGA SPRINGS RESORT
A LEASEHOLD CONDOMINIUM
EXHIBIT "A" – PHASE 1

SECTIONS 28, TOWNSHIP 24 SOUTH, RANGE 28 EAST,
ORANGE COUNTY, FLORIDA.

UNIT FLOOR PLAN

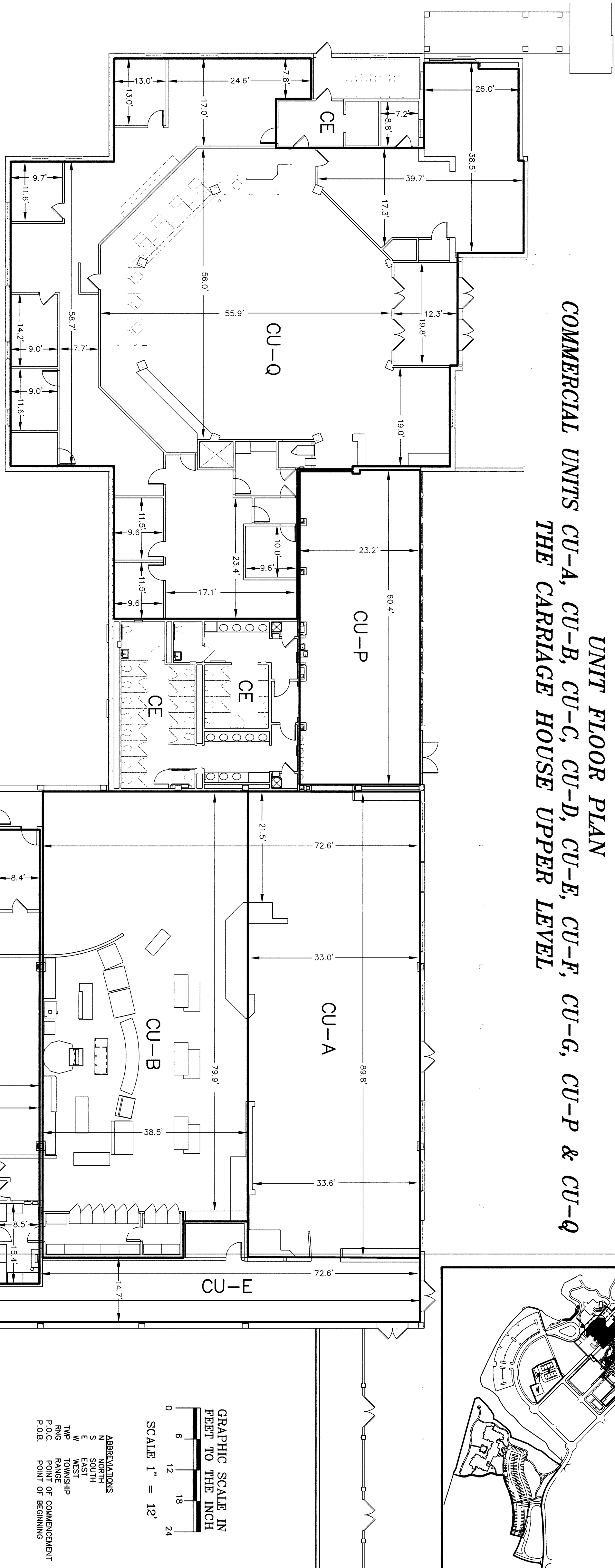
COMMERCIAL UNITS CU-A, CU-B, CU-C, CU-D, CU-E, CU-F, CU-G, CU-P & CU-Q
THE CARRIAGE HOUSE UPPER LEVEL



CONDOMINIUM EXHIBIT

BOOK PAGE.....

35 8



Commercial Units CU-A, CU-B, CU-C, CU-D, CU-E, CU-F, CU-G, CU-P, and CU-Q shall include that part of a building containing the Unit that lies within the boundaries of the Unit, which boundaries are as follows:

1. Upper and Lower Boundaries. The upper and lower boundaries of the Unit shall be the following boundaries extended to an intersection with the perimeter boundaries.
 - A. Upper Boundaries: The interior unfinished surface of the Upper Floor ceiling of the building.
 - B. Lower Boundaries: The horizontal plane through the finished undecorated surface of the floor of the Upper Floor.
2. Perimeter Boundaries. The perimeter boundaries of the Unit shall be the vertical planes along and coincident with the unfinished interior surfaces of perimeter walls.

Not included in the description of Units are as follows:
balconies, terraces, interior stairwells, elevators and utility rooms.

NOTE: SIZE AND SHAPE OF TERRACES AND BALCONIES MAY VARY.

LCE = LIMITED COMMON ELEMENT

CE = COMMON ELEMENT

CU = COMMERCIAL UNIT

PREPARED BY:
JOHNSTON'S
SURVEYING, INC.
500 South Lake Naranja, Naranja, Florida 32764-8800
(407) 847-2179 • Fax (407) 847-6140



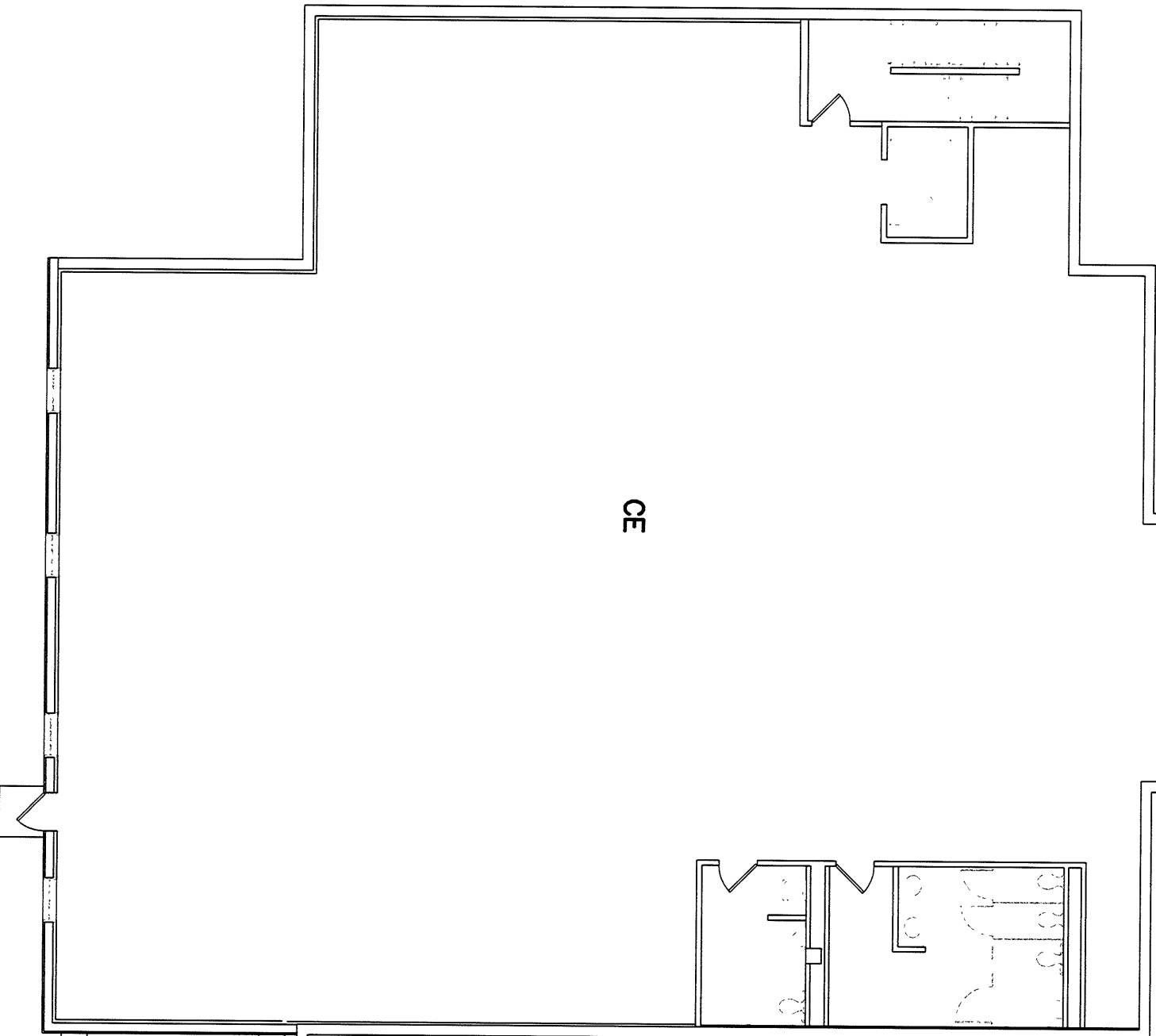
SHEET 8 OF 15

GRAPHIC SCALE IN
FEET TO THE INCH
0 6 12 18 24
SCALE 1" = 12'

ABBREVIATIONS
N NORTH
S SOUTH
E EAST
W WEST
TWP TOWNSHIP
RNG RANGE
P.O.C. POINT OF COMMENCEMENT
P.O.B. POINT OF BEGINNING

DISNEY'S SARATOGA SPRINGS RESORT
A LEASEHOLD CONDOMINIUM
EXHIBIT "A" – PHASE 1
SECTIONS 28, TOWNSHIP 24 SOUTH, RANGE 28 EAST,
ORANGE COUNTY, FLORIDA.

UNIT FLOOR PLAN
COMMERCIAL UNITS CU-H & CU-I
THE CARRIAGE HOUSE LOWER LEVEL



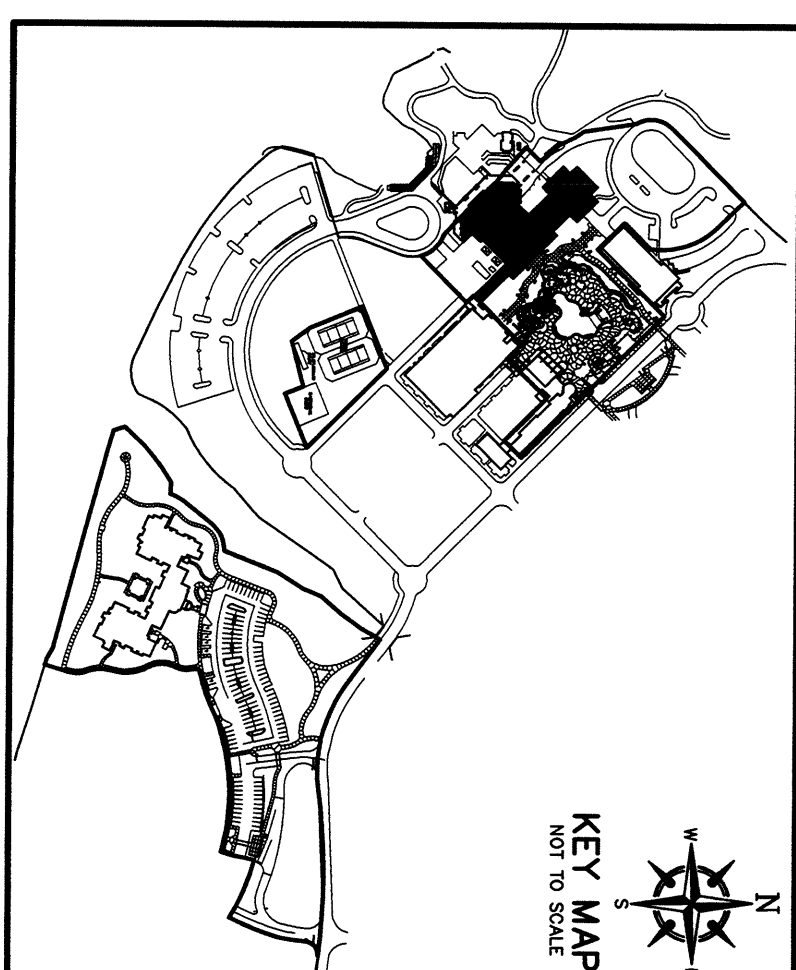
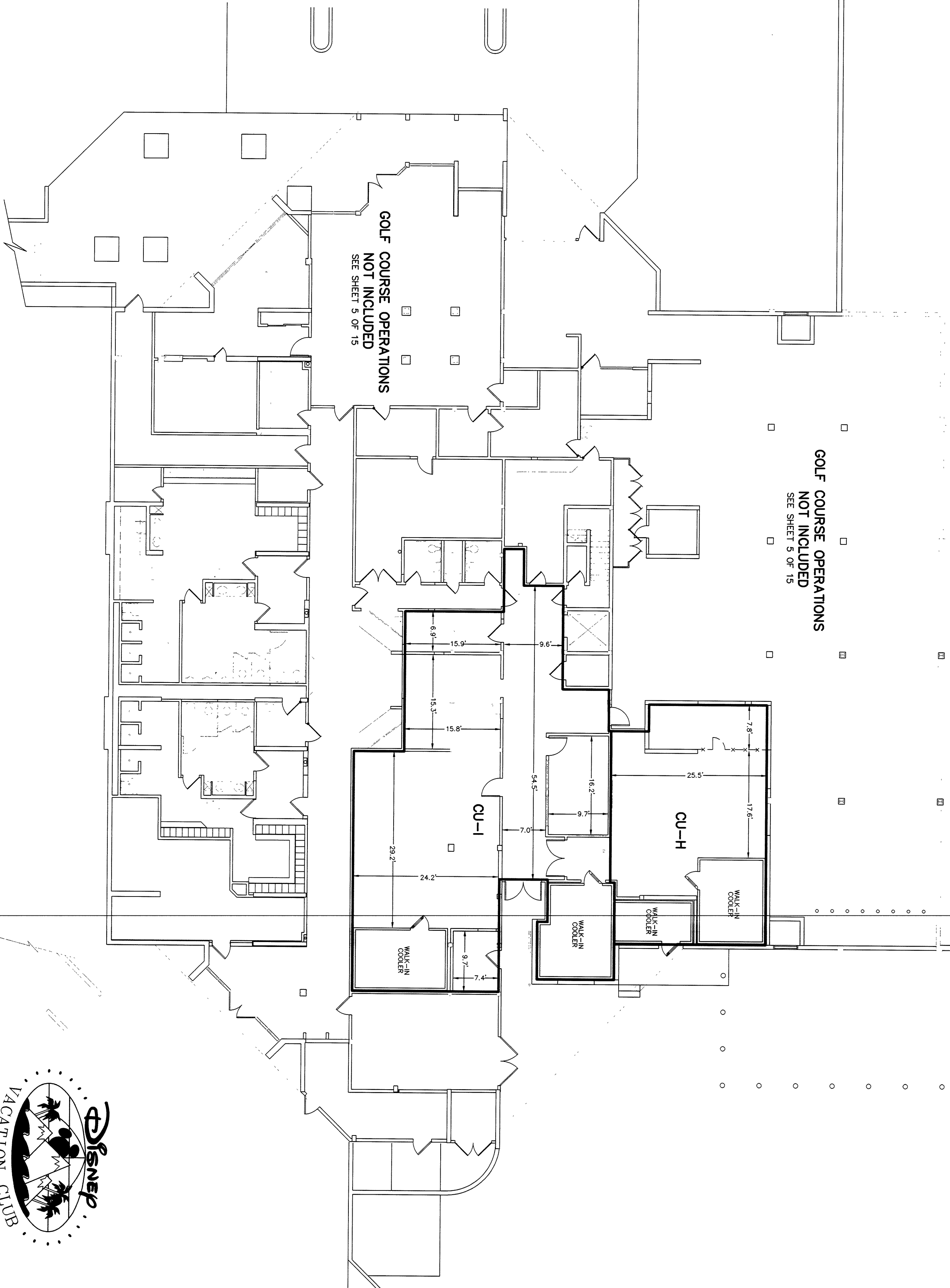
Commercial Units CU-H & CU-I shall include that part of a building containing the Unit that lies within the boundaries of the Unit which boundaries are as follows:

1. Upper and Lower Boundaries: The upper and lower boundaries of the Unit shall be the following boundaries extended to an intersection with the perimeter boundaries.
 - A. Upper Boundaries: The interior unfinished surface of the Lower Floor ceiling of the building.
 - B. Lower Boundaries: The horizontal plane through the finished undecorated surface of the floor of the Lower Floor.
 2. Perimeter Boundaries: The perimeter boundaries of the Unit shall be the vertical planes along and coincident with the unfinished interior surfaces of perimeter walls.
- Not included in the description of Units are as follows:
balconies, terraces, interior stairwells, elevators and utility rooms.

NOTE: SIZE AND SHAPE OF TERRACES AND BALCONIES MAY VARY.
LCE = LIMITED COMMON ELEMENT
CE = COMMON ELEMENT
CU = COMMERCIAL UNIT

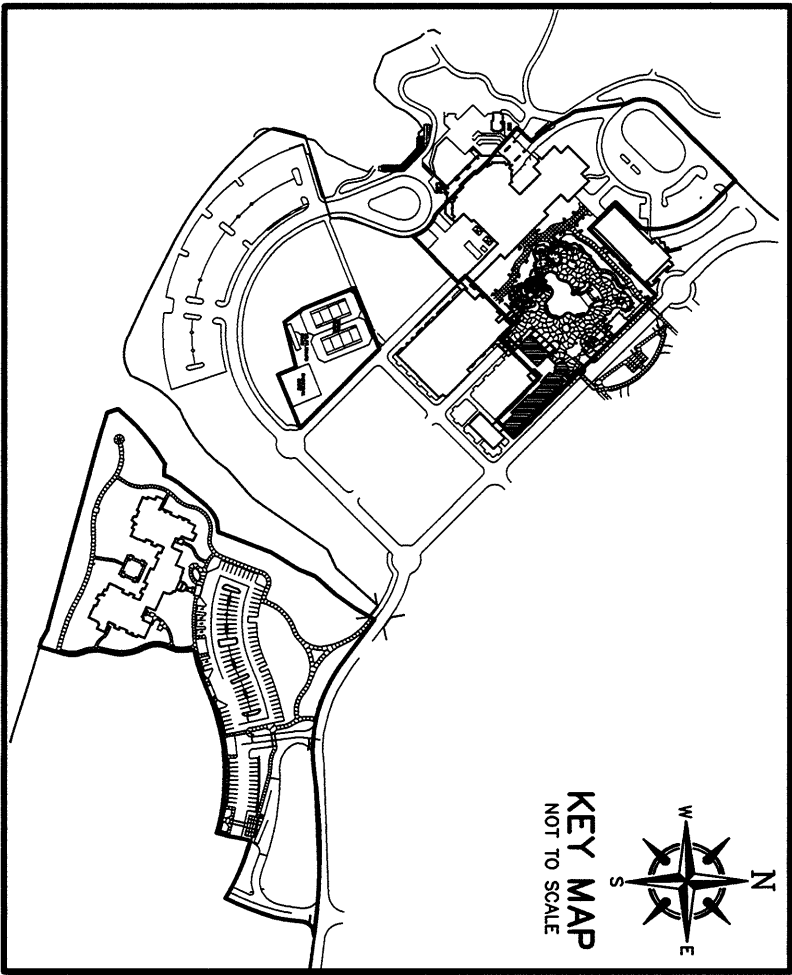
PREPARED BY:
JOHNSTON'S
SURVEYING, INC.
800 Study Unit, Kissimmee, Florida 32744-4855
(407) 847-2179 • Fax (407) 847-6140

GOLF COURSE OPERATIONS
NOT INCLUDED
SEE SHEET 5 OF 15



CONDOMINIUM EXHIBIT
BOOK **35** PAGE..... **9**

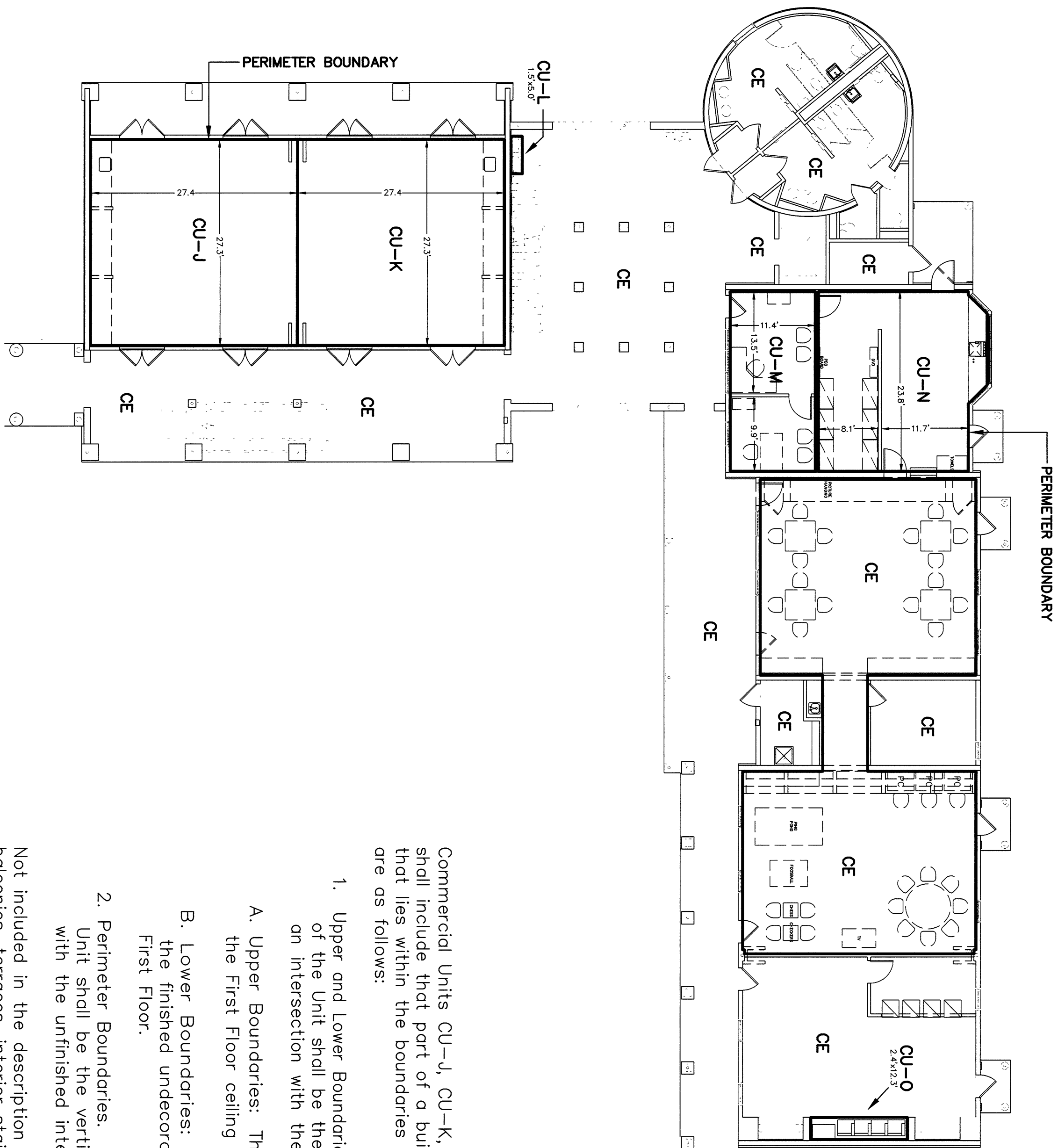




DISNEY'S SARATOGA SPRINGS RESORT
A LEASEHOLD CONDOMINIUM
EXHIBIT "A" – PHASE 1

SECTIONS 28, TOWNSHIP 24 SOUTH, RANGE 28 EAST,
ORANGE COUNTY, FLORIDA.

UNIT FLOOR PLAN
COMMERCIAL UNITS CU-J, CU-K, CU-L, CU-M, CU-N & CU-O
THE GRANDSTAND – FIRST FLOOR

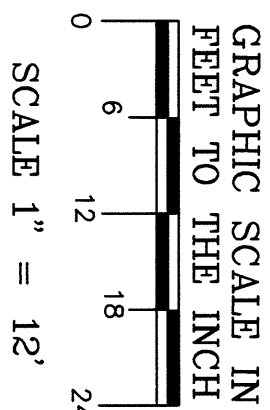


Commercial Units CU-J, CU-K, CU-L, CU-M, CU-N & CU-O shall include that part of a building containing the Unit that lies within the boundaries of the Unit, which boundaries are as follows:

1. Upper and Lower Boundaries. The upper and lower boundaries of the Unit shall be the following boundaries extended to an intersection with the perimeter boundaries.
 - A. Upper Boundaries: The interior unfinished surface of the First Floor ceiling of the building.
 - B. Lower Boundaries: The horizontal plane through the finished undecorated surface of the floor of the First Floor.
2. Perimeter Boundaries. The perimeter boundaries of the Unit shall be the vertical planes along and coincident with the unfinished interior surfaces of perimeter walls.

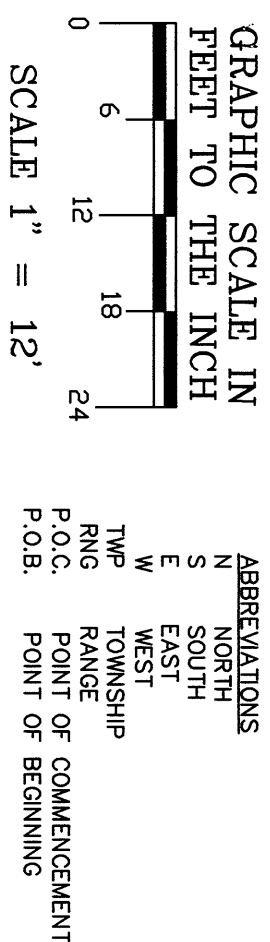
Not included in the description of Units are as follows:
balconies, terraces, interior stairwells, elevators and utility rooms.

NOTE: SIZE AND SHAPE OF TERRACES AND BALCONIES MAY VARY.
LCE = LIMITED COMMON ELEMENT
CE = COMMON ELEMENT
CU = COMMERCIAL UNIT



ABBREVIATIONS
SARATOGA SPRINGS
S SOUTH
E EAST
TWP TOWNSHIP
RNG RANGE
P.O.C. POINT OF COMMENCEMENT
P.O.B. POINT OF BEGINNING





DISNEY'S SARATOGA SPRINGS RESORT
A LEASEHOLD CONDOMINIUM
EXHIBIT "A" – PHASE 1

SECTIONS 28, TOWNSHIP 24 SOUTH, RANGE 28 EAST,

ORANGE COUNTY, FLORIDA.

UNIT FLOOR PLANS

UNITS 1-A, 1-B, 1-C & 1-D

COMMERCIAL UNIT CU-1

Units 1-A, 1-B, 1-C, 1-D and CU-1 shall include that part of a building containing the Unit that lies within the boundaries of the Unit, which boundaries are as follows:

1. Upper and Lower Boundaries: The upper and lower boundaries of the Unit shall be the following boundaries extended to an intersection with the perimeter boundaries.
 - A. Upper Boundaries: The interior unfinished surface of the First Floor ceiling of the building.
 - B. Lower Boundaries: The horizontal plane through the finished undecorated surface of the floor of the First Floor.

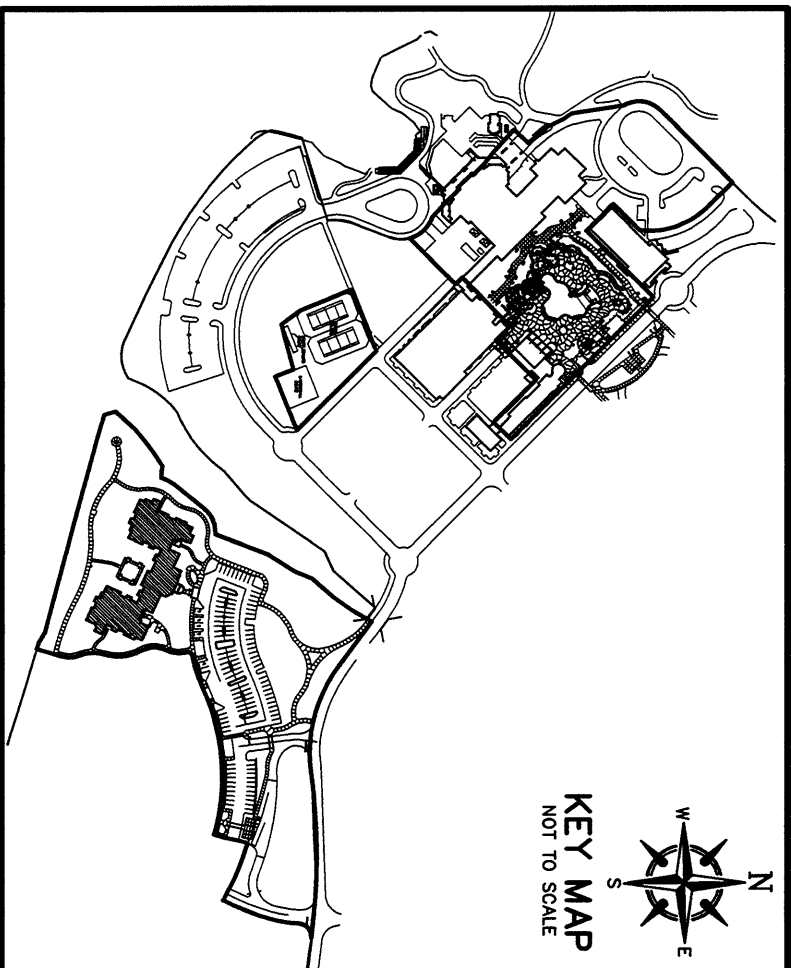
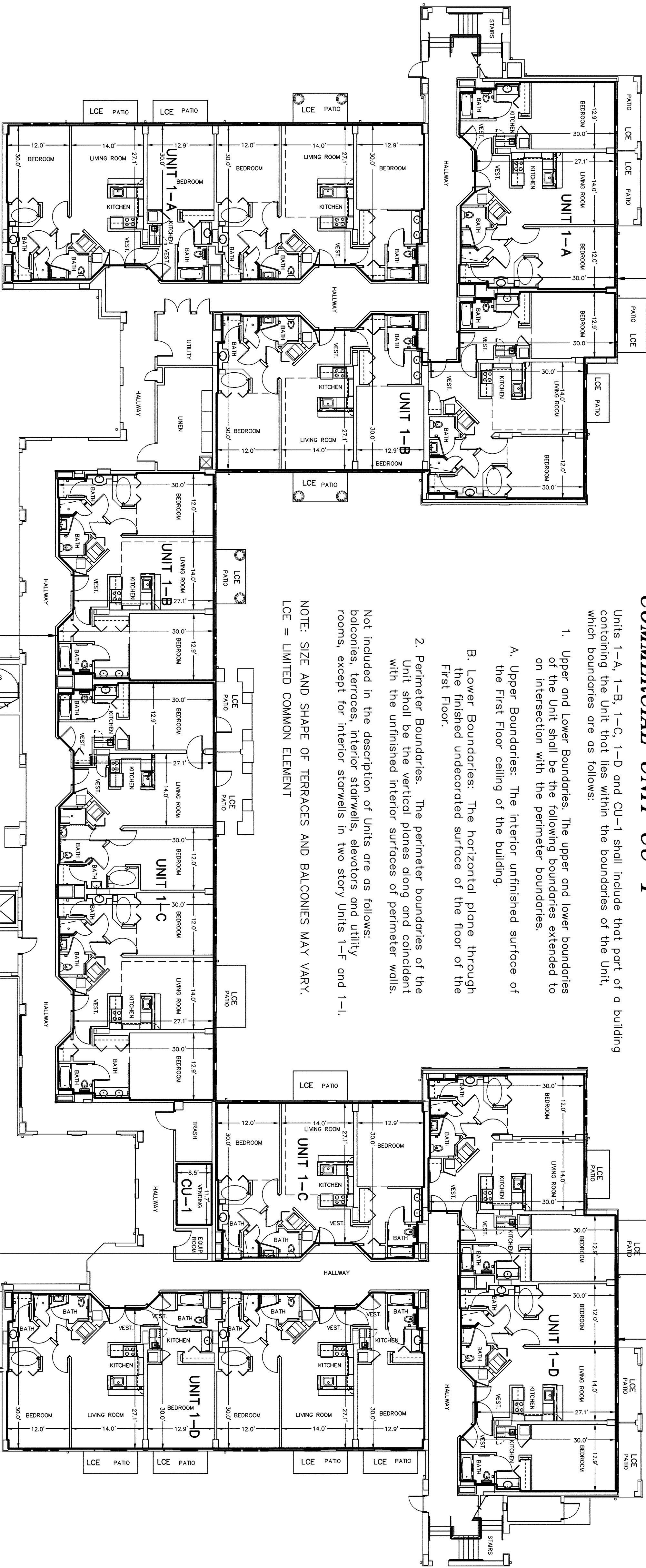
2. Perimeter Boundaries: The perimeter boundaries of the Unit shall be the vertical planes along and coincident with the unfinished interior surfaces of perimeter walls.

Not included in the description of Units are as follows:

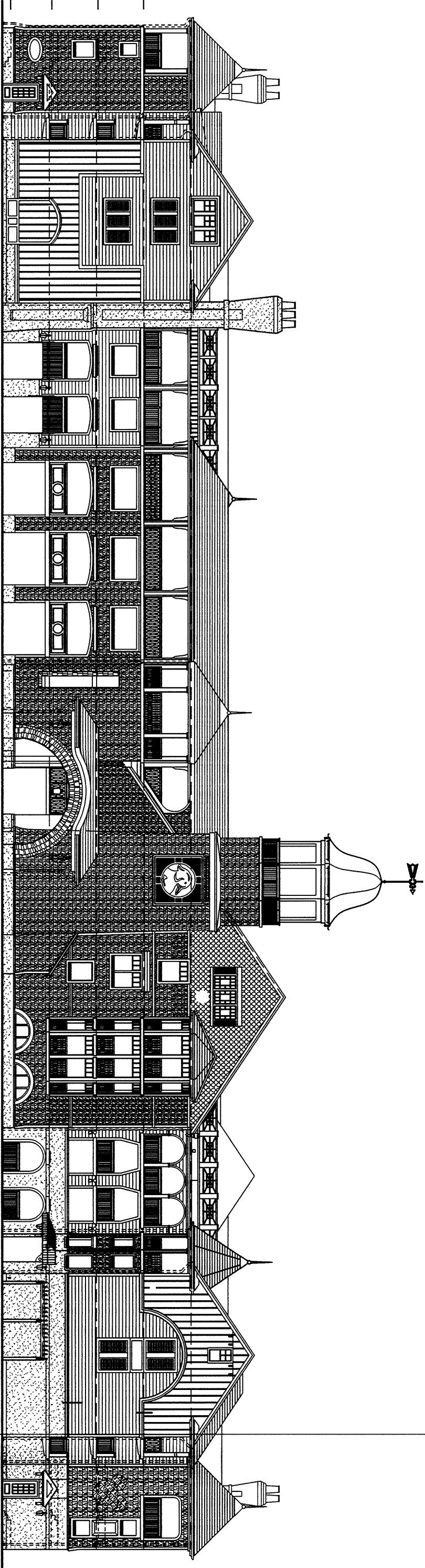
balconies, terraces, interior stairwells, elevators and utility rooms, except for interior stairwells in two story Units 1-F and 1-I.

NOTE: SIZE AND SHAPE OF TERRACES AND BALCONIES MAY VARY.

LCE = LIMITED COMMON ELEMENT



- 4TH FLOOR
EL.=28.00
3RD FLOOR
EL.=18.67
2ND FLOOR
EL.=9.33
1ST FLOOR
EL.=00.00



CONDOMINIUM EXHIBIT
BOOK **35** PAGE: **11**

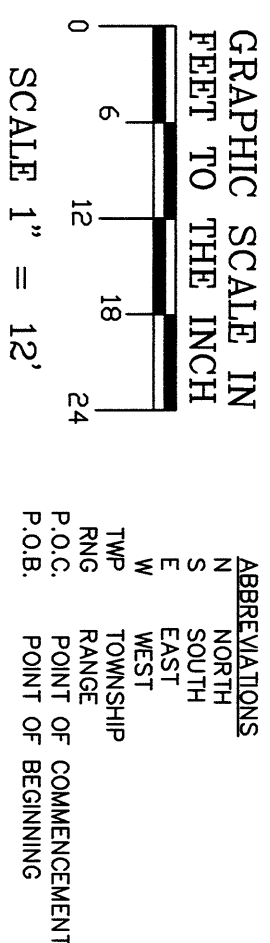


TYPICAL GROUND FLOOR INSIDE UNIT
THRU FOURTH FLOOR UNIT
WITH APPROXIMATE INTERIOR DIMENSIONS

SHEET 11 OF 15

PREPARED BY:
JOHNSTON'S
SURVEYING, INC.
500 S.W. 10th Avenue, Suite 1400
(407) 847-2179 • Fax (407) 847-6140

BC-OSP



DISNEY'S SARATOGA SPRINGS RESORT
A LEASEHOLD CONDOMINIUM
EXHIBIT "A" – PHASE 1

SECTIONS 28, TOWNSHIP 24 SOUTH, RANGE 28 EAST,
ORANGE COUNTY, FLORIDA.

UNIT FLOOR PLANS

UNITS 1-E, 1-G, 1-H & 1-J

PERIMETER BOUNDARY

2 STORY UNIT
UNIT 1-J
SEE SHEET 13 OF 15

Units 1-E, 1-G, 1-H & 1-J shall include that part of a building containing the Unit that lies within the boundaries of the Unit, which boundaries are as follows:

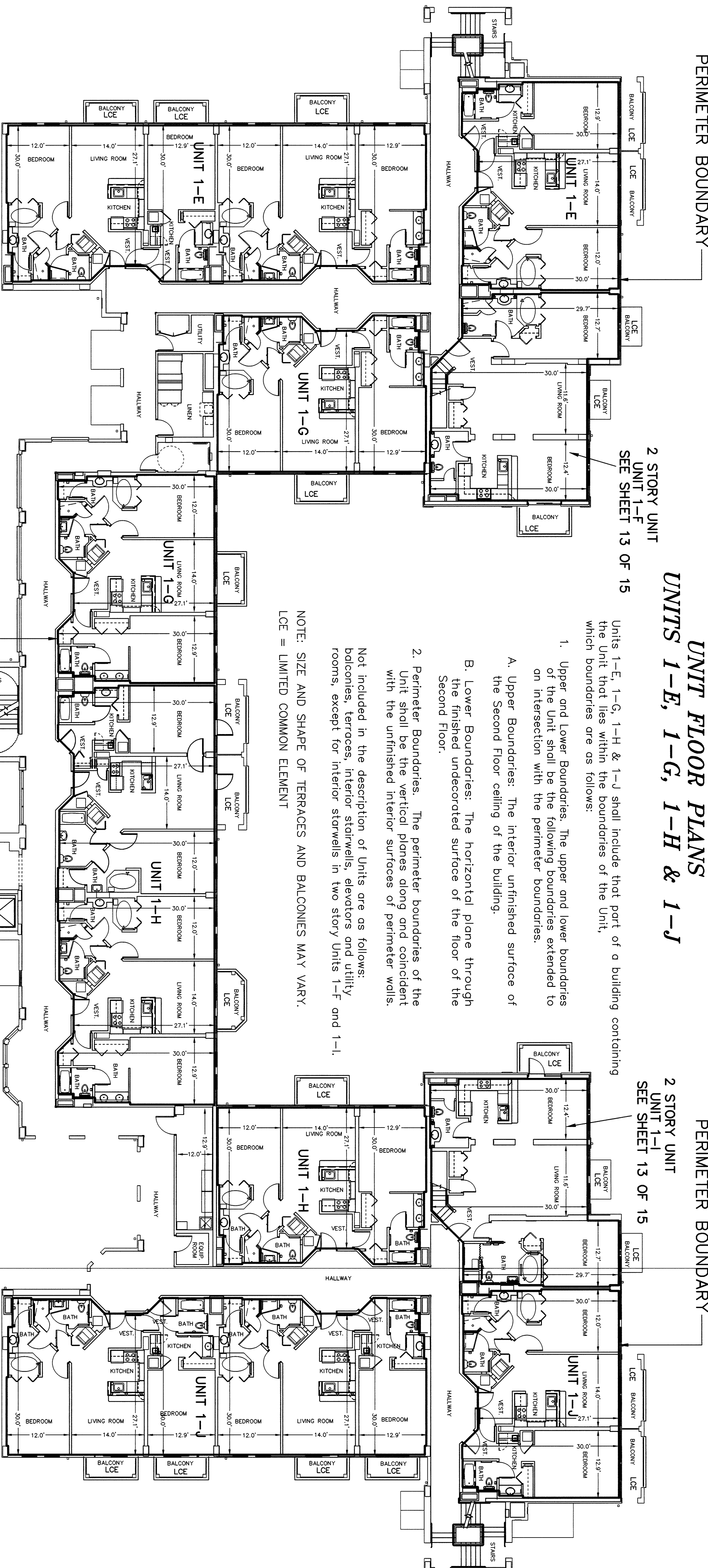
1. Upper and Lower Boundaries: The upper and lower boundaries of the Unit shall be the following boundaries extended to an intersection with the perimeter boundaries.
 - A. Upper Boundaries: The interior unfinished surface of the Second Floor ceiling of the building.
 - B. Lower Boundaries: The horizontal plane through the finished undecorated surface of the floor of the Second Floor.
2. Perimeter Boundaries: The perimeter boundaries of the Unit shall be the vertical planes along and coincident with the unfinished interior surfaces of perimeter walls.

Not included in the description of Units are as follows:

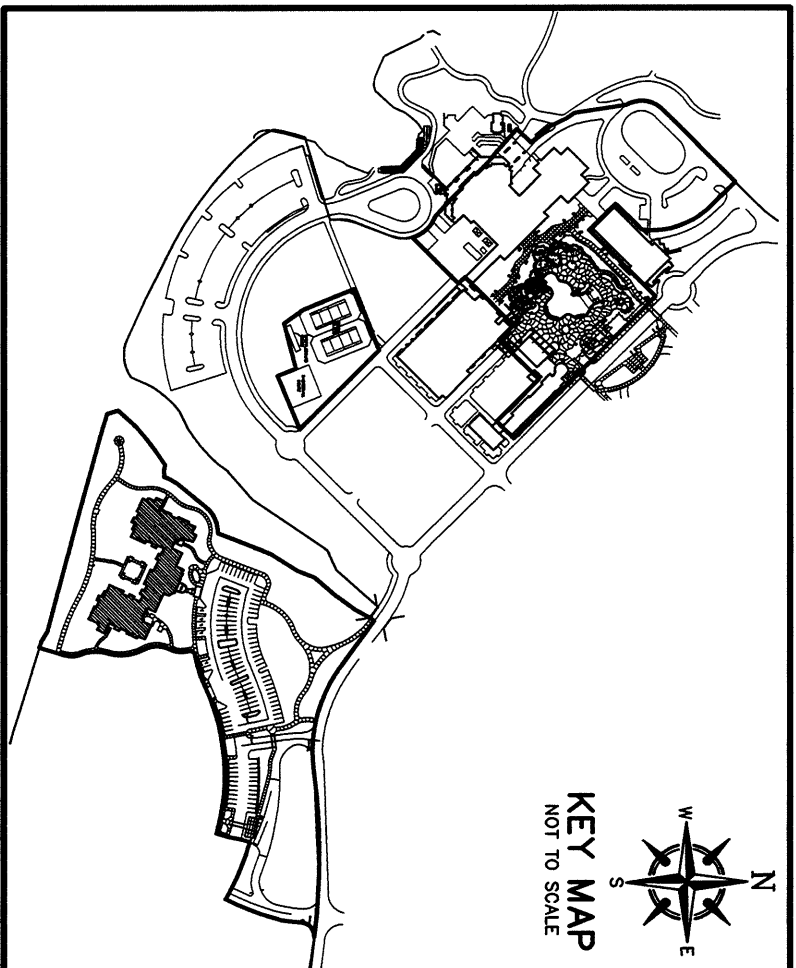
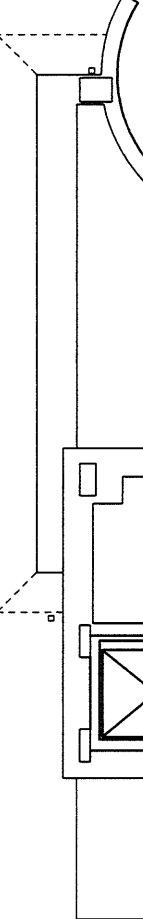
balconies, terraces, interior stairwells, elevators and utility rooms, except for interior stairwells in two story Units 1-F and 1-I.

NOTE: SIZE AND SHAPE OF TERRACES AND BALCONIES MAY VARY.

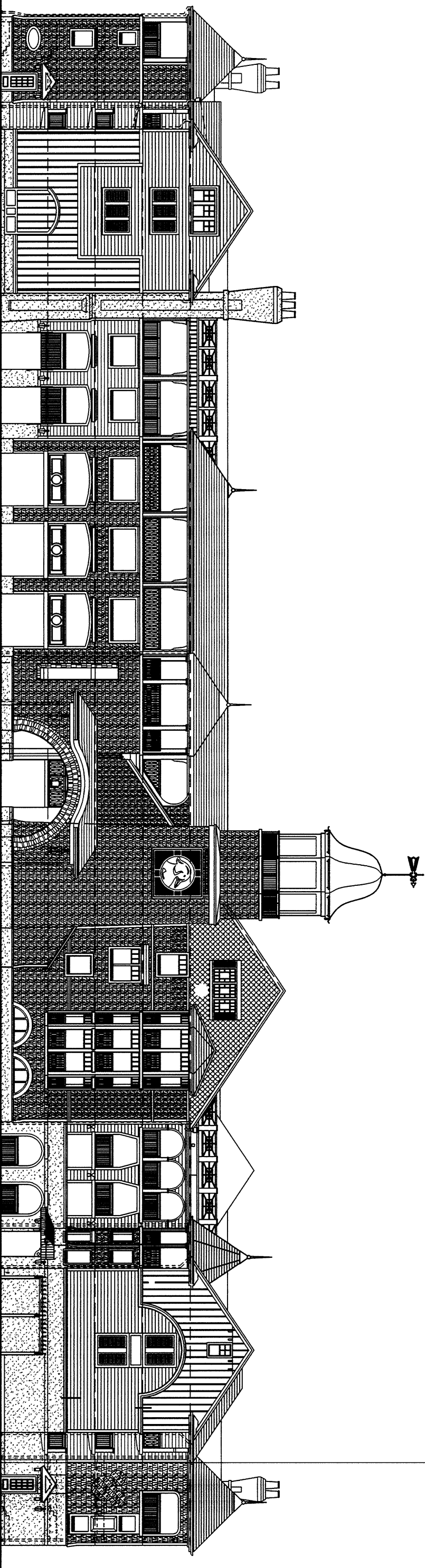
LCE = LIMITED COMMON ELEMENT



PERIMETER BOUNDARY

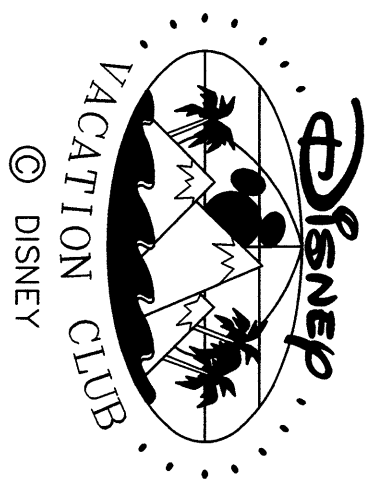


- 4TH FLOOR
EL.=28.00
3RD FLOOR
EL.=18.67
2ND FLOOR
EL.=9.33
1ST FLOOR
EL.=00.00



TYPICAL GROUND FLOOR INSIDE UNIT
THRU FOURTH FLOOR UNIT
WITH APPROXIMATE INTERIOR DIMENSIONS

CONDOMINIUM EXHIBIT
BOOK **35** PAGE **12**



PREPARED BY:
JOHNSTON'S SURVEYING, INC.
3905 STATE ROAD 161, SUITE 304, SARASOTA, FL 34231
(407) 847-4179 • Fax (407) 847-6140

GRAPHIC SCALE IN FEET TO THE INCH

0 6 12 18 24

SCALE 1" = 12'

ABBREVIATIONS

S SOUTH

E EAST

TWP TOWNSHIP

RNG RANGE

P.O.C. POINT OF COMMENCEMENT

P.O.B. POINT OF BEGINNING

DISNEY'S SARATOGA SPRINGS RESORT
A LEASEHOLD CONDOMINIUM
EXHIBIT "A" – PHASE 1

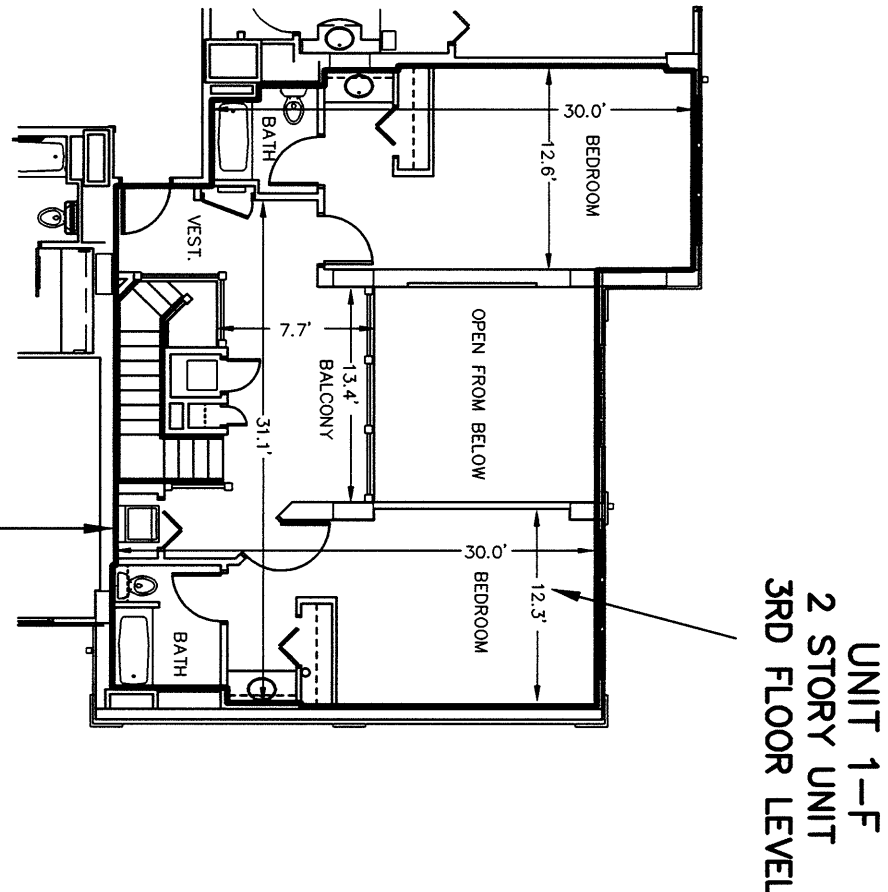
SECTIONS 28, TOWNSHIP 24 SOUTH, RANGE 28 EAST,
ORANGE COUNTY, FLORIDA.
UNIT FLOOR PLANS
UNITS 1-F & 1-I

Units 1-F & 1-I shall include that part of a building containing the Unit that lies within the boundaries of the Unit, which boundaries are as follows:

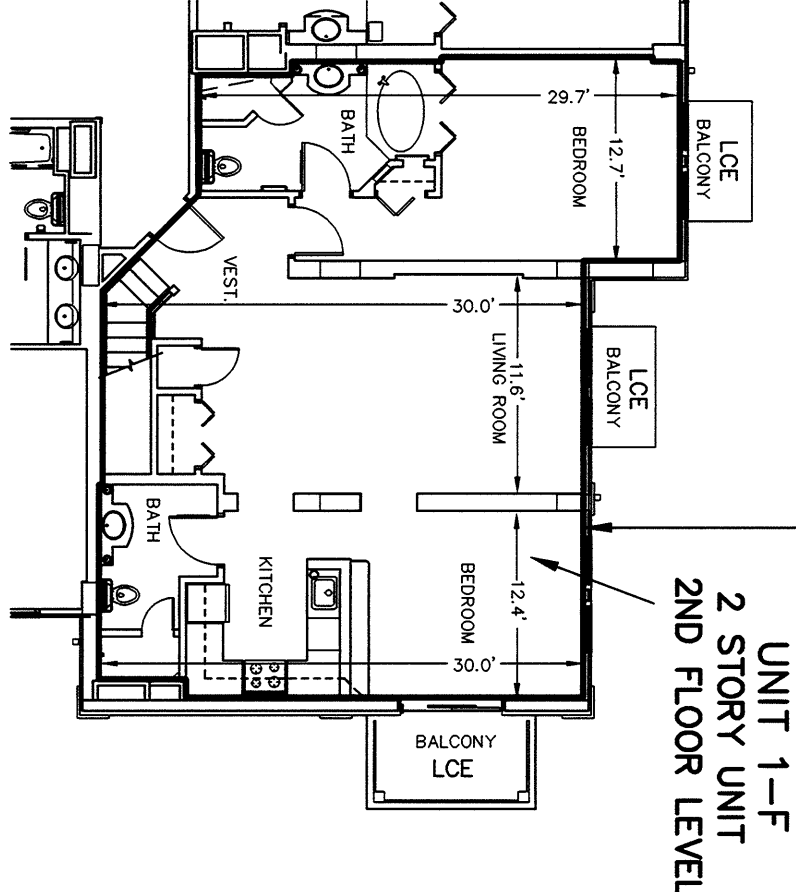
1. Upper and Lower Boundaries: The upper and lower boundaries of the Unit shall be the following boundaries extended to an intersection with the perimeter boundaries.
 - A. Upper Boundaries: The interior unfinished surface of the Third Floor ceiling of the building.
 - B. Lower Boundaries: The horizontal plane through the finished undecorated surface of the floor of the Second Floor.
2. Perimeter Boundaries: The perimeter boundaries of the Unit shall be the vertical planes along and coincident with the unfinished interior surfaces of perimeter walls.

Not included in the description of Units are as follows:
balconies, terraces, interior stairwells, elevators and utility rooms, except for interior stairwells in two story Units 1-F and 1-I.

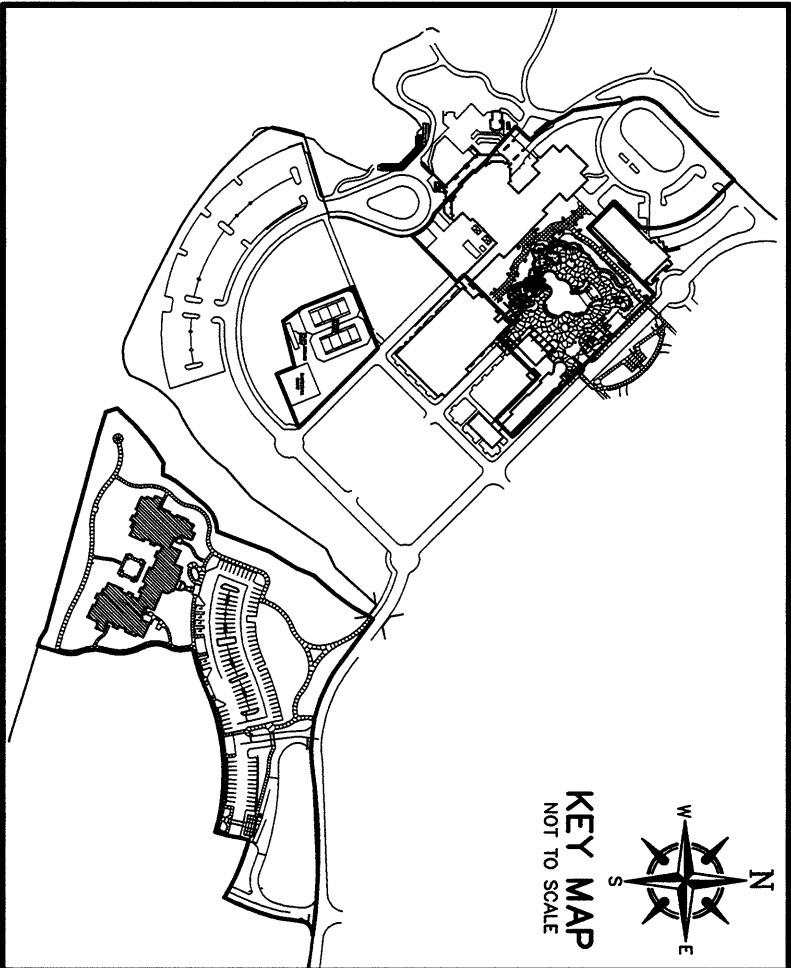
NOTE: SIZE AND SHAPE OF TERRACES AND BALCONIES MAY VARY.
LCE = LIMITED COMMON ELEMENT



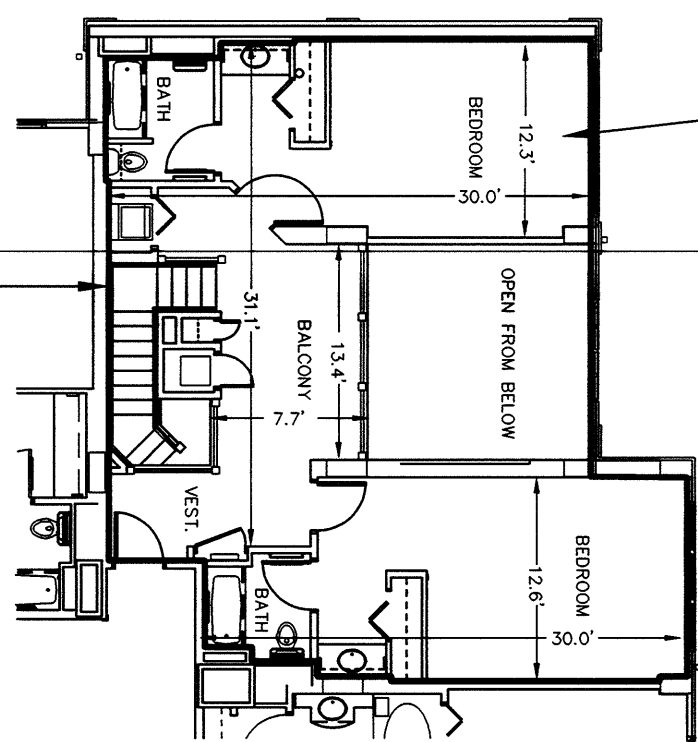
PERIMETER BOUNDARY



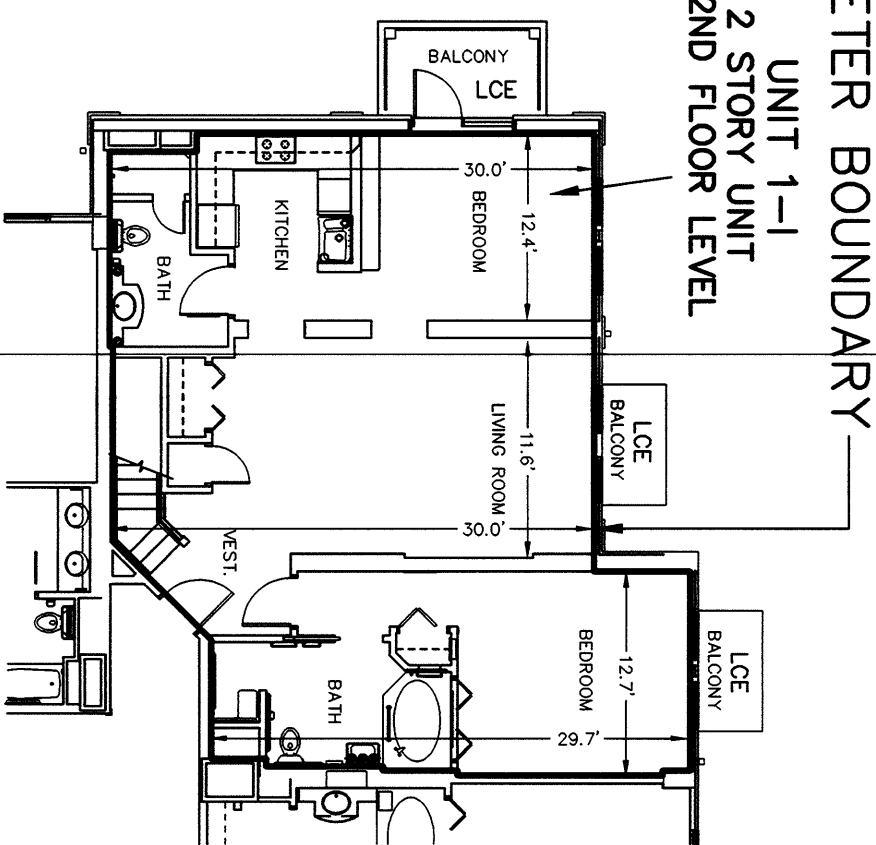
PERIMETER BOUNDARY



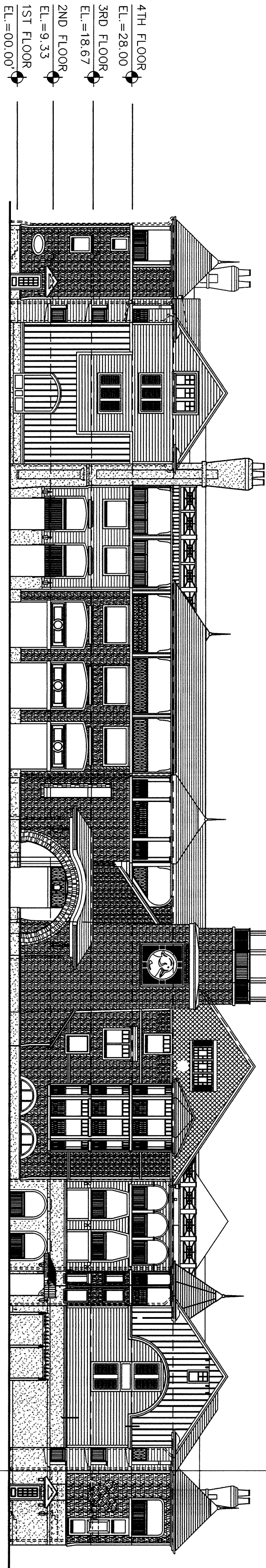
UNIT 1-I
2 STORY UNIT
3RD FLOOR LEVEL



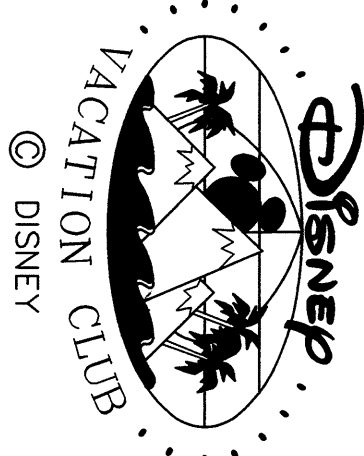
PERIMETER BOUNDARY



PERIMETER BOUNDARY

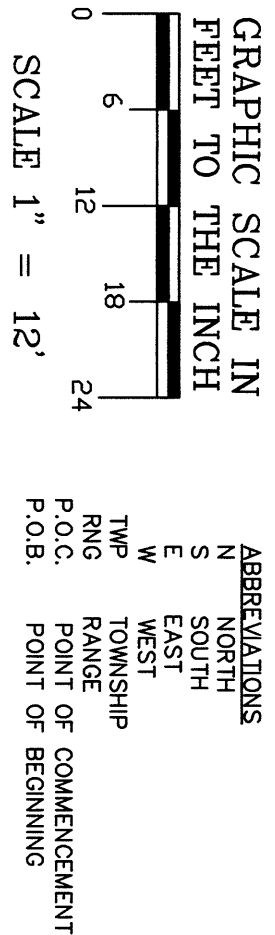


PREPARED BY:
JOHNSTON'S
SURVEYING, INC.
580 Sandy Lane, Kissimmee, Florida 34744-8800
(407) 847-3179 • Fax (407) 847-8140



SHEET 13 OF 15

CONDOMINIUM EXHIBIT
BOOK **35** PAGE..... **13**



PERIMETER BOUNDARY

DISNEY'S SARATOGA SPRINGS RESORT
A LEASEHOLD CONDOMINIUM
EXHIBIT "A" – PHASE 1

SECTIONS 28, TOWNSHIP 24 SOUTH, RANGE 28 EAST,
ORANGE COUNTY, FLORIDA.

UNIT FLOOR PLANS

UNITS 1-K, 1-L, 1-M & 1-N

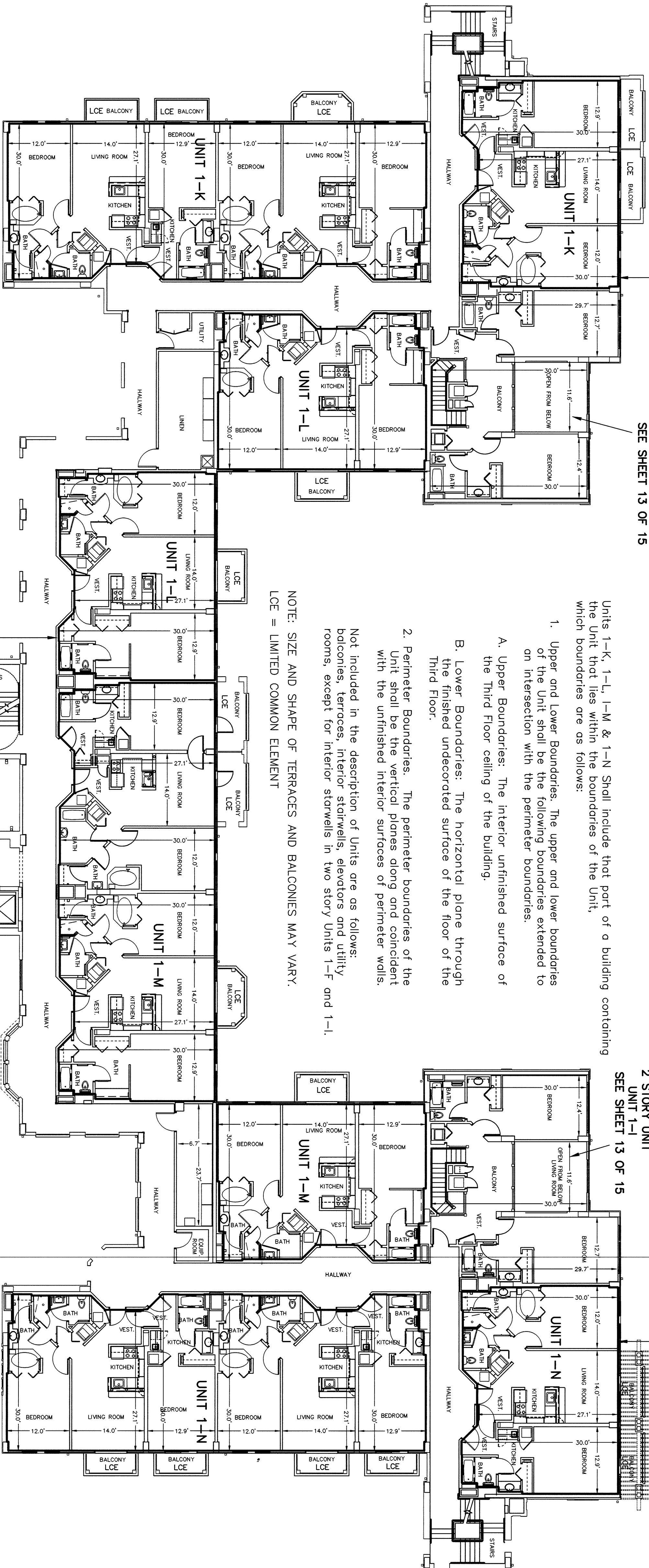
2 STORY UNIT
UNIT 1-F
SEE SHEET 13 OF 15

Units 1-K, 1-L, 1-M & 1-N Shall include that part of a building containing the Unit that lies within the boundaries of the Unit, which boundaries are as follows:

1. Upper and Lower Boundaries: The upper and lower boundaries of the Unit shall be the following boundaries extended to an intersection with the perimeter boundaries.
 - A. Upper Boundaries: The interior unfinished surface of the Third Floor ceiling of the building.
 - B. Lower Boundaries: The horizontal plane through the finished undecorated surface of the floor of the Third Floor.
2. Perimeter Boundaries: The perimeter boundaries of the Unit shall be the vertical planes along and coincident with the unfinished interior surfaces of perimeter walls.

Not included in the description of Units are as follows:
balconies, terraces, interior stairwells, elevators and utility rooms, except for interior stairwells in two story Units 1-F and 1-I.

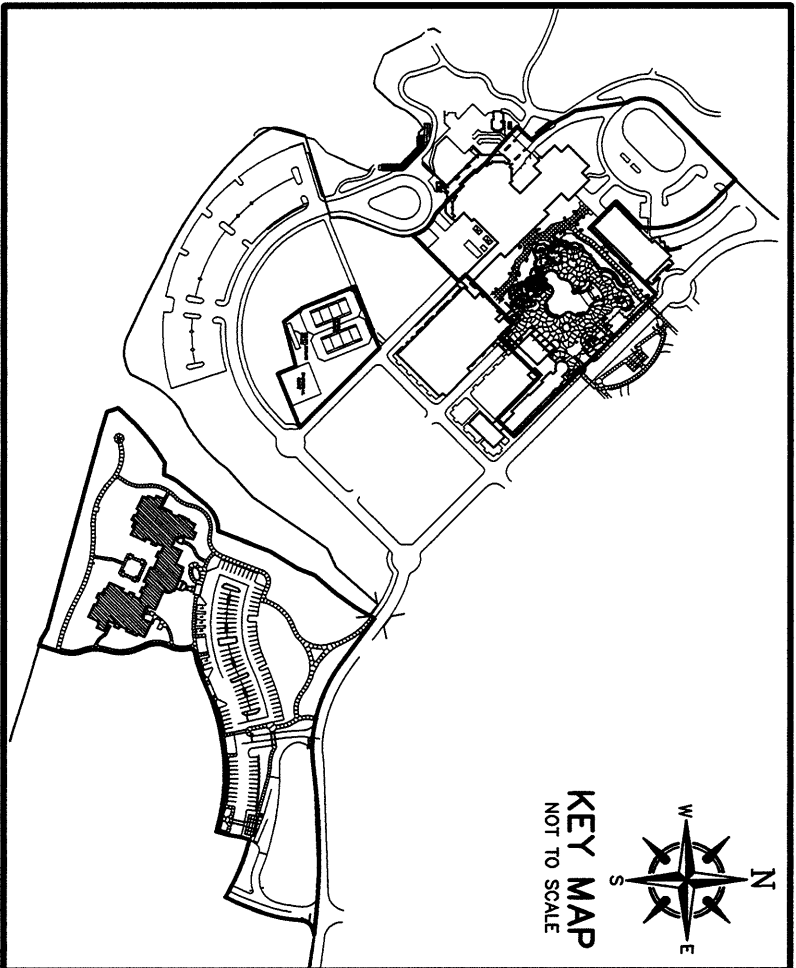
NOTE: SIZE AND SHAPE OF TERRACES AND BALCONIES MAY VARY.
LCE = LIMITED COMMON ELEMENT



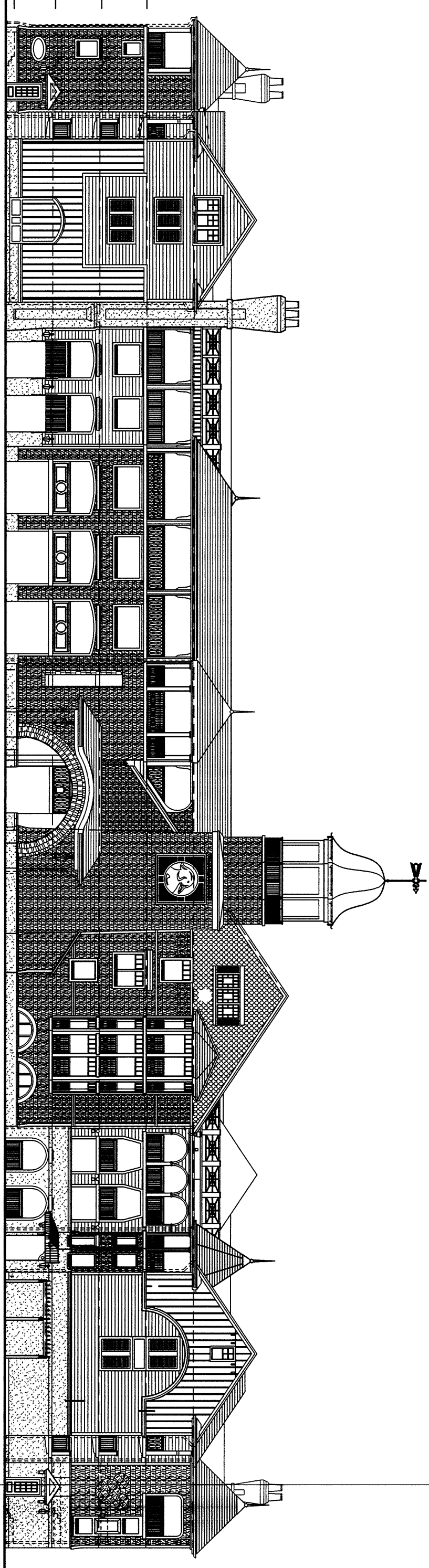
PERIMETER BOUNDARY

PERIMETER BOUNDARY

2 STORY UNIT
UNIT 1-I
SEE SHEET 13 OF 15



- 4TH FLOOR
EL.=28.00
3RD FLOOR
EL.=18.67
2ND FLOOR
EL.=9.33
1ST FLOOR
EL.=00.00



TYPICAL GROUND FLOOR INSIDE UNIT
THRU FOURTH FLOOR UNIT
SIDE ELEVATION
WITH APPROXIMATE INTERIOR DIMENSIONS

CONDOMINIUM EXHIBIT
BOOK 35 PAGE..... 14



SECTIONS 28, TOWNSHIP 24 SOUTH, RANGE 28 EAST,

ORANGE COUNTY, FLORIDA.

UNITS 1-0, 1-P & 1-Q

Units 1-0, 1-P & 1-Q shall include that part of a building containing the Unit that lies within the boundaries of the Unit, which boundaries are as follows:

1. Upper and lower Boundaries: The upper and lower boundaries of the Unit shall be the following boundaries extended to an intersection with the perimeter boundaries.
 - A. Upper Boundaries: The interior unfinished surface of the Fourth Floor ceiling of the building.
 - B. Lower Boundaries: The horizontal plane through the finished undecorated surface of the floor of the Fourth Floor.

2. Perimeter Boundaries. The perimeter boundaries of the Unit shall be the vertical planes along and coincident with the unfinished interior surfaces of perimeter walls.

NOTE: SIZE AND SHAPE OF TERRACES AND BALCONIES MAY VARY
LCE = LIMITED COMMON ELEMENT



PREPARED BY:
JOHNSTON'S
SURVEYING, INC.
900 Study Lane, Kissimmee, Florida 34744-8685
(407) 847-2179 • Fax (407) 847-6140

